

# **ROTTLER**

## **H86A OPTIONAL EQUIPMENT CATALOG**





## **ORDERING PROCEDURE**

Contact your regional Rottler sales rep for assistance in ordering optional equipment, replacement parts, or tooling.

If you are unable to contact your regional Rottler sales rep, call the factory at 253-872-7050 and ask to speak to the parts sales specialists.

Have the following information handy to expedite the ordering process:

1. Your name, business name, and contact number
2. Customer number
3. If you don't have a customer number, your billing address
4. Shipping address if different from billing address
5. Machine model and serial number
6. Part number and description of what you want to order
7. Preferred method of shipment

You may also contact us via e-mail with the above information. Send e-mail requests to: [parts@rottlermfg.com](mailto:parts@rottlermfg.com)

In some cases you may be requested to send a photo of the part you are ordering if it is a replacement part, or doesn't appear in the database.

If you are unsure which part you need to order, contact our service department and ask to speak to one of our service consultants. They will assist you in determining which part you require.

**THERE IS A MINIMUM ORDER OF \$25.00**





# Contents

**Optional Fixturing..... 1**

514-7A Manual Indexable Roll Over Fixture..... 1

514-7-14E 2” 50.8mm Small Diameter Main Line Bar..... 2

502-1-30H Clamp Arm Assembly..... 2

11115 2” (50mm) X 3” (75mm) Parallels..... 3

11112 Universal 8” (203mm) Heavy Duty T-Slot Parallels..... 3

11114 Universal 16” (405mm) Heavy Duty T-Slot Parallels..... 4

**Fixture for Honing Multiple Cylinder Liners (4 Liners) ..... 5**

514-11-5 Cylinder Liner Honing Fixture..... 5

514-11-6 Fixture Plate, CAT 3400..... 5

514-11-7 Fixture Plate, CAT 3500..... 6

514-11-4 Fixture Plate, CAT C175..... 6

**Optional Coolant and Filter Equipment..... 7**

514-4-71C Synthetic Coolant..... 7

514-4-71D Coolant Refractor ..... 7

514-2-42C Dual Gradient 50-5 Micron Replacement Filter Cartridge..... 8

514-2-42A Cannister Magnetic Filter System..... 8

**Optional Rottler Precision Hone Heads, Sleeves and Stone Holders ..... 9**

514-9J Medium Rottler Precision 4 Stone Holder Hone Head Assembly..... 9

514-10-13A Stone Holders ..... 9

514-10-13F Stone Holders..... 9

514-10-13B Stone Holders ..... 9

514-10-13G Stone Holders ..... 10

514-10-13C Stone Holders ..... 10

514-10-13H Stone Holders ..... 10

514-10-13D Stone Holders ..... 10

514-9Q Large Rottler Precision Heavy Duty 6 Stone Holder Hone Head Assembly ..... 11

514-9S Large Rottler Precision Heavy Duty 6 Stone Holder Hone Head Assembly..... 11

514-9-4E Sleeve Assembly ..... 11

514-9-31J Stone Holders..... 12

514-9-31A Stone Holders ..... 12

514-9-31B Stone Holders ..... 12

514-9-4F Sleeve Assembly..... 13

514-9-31C Stone Holders ..... 13



**514-9-31D Stone Holders ..... 13**

**514-9-31E Stone Holders ..... 14**

**514-9-4G Sleeve Assembly ..... 14**

**514-9-31F Stone Holder..... 14**

**514-9-31G Stone Holder ..... 15**

**514-9-31H Stone Holder ..... 15**

**514-9-31K Stone Holder ..... 15**

**514-9-31L Stone Holder..... 16**

**514-9-31M Stone Holder..... 16**

**514-9-31N Stone Holder ..... 16**

**514-9-31P Stone Holder ..... 17**

**514-9-31Q Stone Holder ..... 17**

**514-9-31R Stone Holder ..... 17**

**514-9-31S Stone Holder ..... 18**

**Diamond Abrasives for Rottler Precision 6 Stone Holder Hone Heads ..... 18**

**514-9-32F Diamond Stones, 80 grit..... 18**

**514-9-32R Diamond Stones 80 grit ..... 18**

**514-9-32W Diamond Stones, 140/170 grit..... 19**

**514-9-32K Diamond Stones, 170/200 grit ..... 19**

**514-9-32J Diamond Stones, 270/325 grit..... 19**

**514-9-32E Diamond Stones, 325/400 grit..... 19**

**514-9-33K Diamond Stones, 325/400 grit ..... 19**

**514-9-32C Diamond Stones, 500 grit ..... 20**

**514-9-32L Diamond Stones, 550 grit..... 20**

**514-9-32G Diamond Stones, 600 grit ..... 20**

**514-9-33 Diamond Stones, 800 grit..... 20**

**514-9-33C Diamond Stones, 800 grit ..... 21**

**514-9-33J Diamond Stones, 1200 grit..... 21**

**514-9-33B Diamond Stones, 270/325 grit ..... 21**

**514-9-32D Diamond Stones, 325/400 grit ..... 22**

**514-9-33A Diamond Stones, 800 grit ..... 22**

**514-9-35C CBN Stones, 320 grit..... 22**

**514-9-35D CBN Stones, 400 grit..... 22**

**514-9-35B CBN Stones, 600 grit..... 22**

**514-9-14H Brushes, for Plateau Finishing..... 23**

<b>514-9-14Y Brushes, for Plateau Finishing.....</b>	<b>23</b>
<b>514-9P Large Rottler Precision Heavy Duty 4 Stone Holder Hone Head Assembly.....</b>	<b>24</b>
<b>514-9R Large Rottler Precision Heavy Duty 4 Stone Holder Hone Head Assembly .....</b>	<b>24</b>
<b>514-9-4A Sleeve Assembly .....</b>	<b>24</b>
<b>514-9-6J Stone Holders.....</b>	<b>25</b>
<b>514-9-6A Stone Holders .....</b>	<b>25</b>
<b>514-9-6B Stone Holders .....</b>	<b>25</b>
<b>514-9-4B Sleeve Assembly .....</b>	<b>26</b>
<b>514-9-6C Stone Holders .....</b>	<b>26</b>
<b>514-9-6D Stone Holders .....</b>	<b>26</b>
<b>514-9-6E Stone Holders .....</b>	<b>27</b>
<b>514-9-4C Sleeve Assembly .....</b>	<b>27</b>
<b>514-9-6F Stone Holders.....</b>	<b>27</b>
<b>514-9-6G Stone Holders .....</b>	<b>28</b>
<b>514-9-6H Stone Holders .....</b>	<b>28</b>
<b>514-9-6K Stone Holders .....</b>	<b>28</b>
<b>514-9-6L Stone Holders.....</b>	<b>28</b>
<b>514-9-6M Stone Holders.....</b>	<b>29</b>
<b>514-9-6N Stone Holders .....</b>	<b>29</b>
<b>514-9-6P Stone Holders .....</b>	<b>29</b>
<b>514-9-6Q Stone Holders .....</b>	<b>30</b>
<b>514-9-6R Stone Holders .....</b>	<b>30</b>
<b>514-9-6S Stone Holders .....</b>	<b>30</b>
<b>514-9-14F Diamond Stones, 80 grit.....</b>	<b>31</b>
<b>514-9-14R Diamond Stones, 80 grit .....</b>	<b>31</b>
<b>514-9-14W Diamond Stones, 140/170 grit.....</b>	<b>31</b>
<b>514-9-14K Diamond stones, 170/200 grit.....</b>	<b>31</b>
<b>514-9-14M Diamond Stones, 170/200 grit .....</b>	<b>32</b>
<b>514-9-21M Diamond stones, 170/200 grit .....</b>	<b>32</b>
<b>514-9-14J Diamond Stones, 270/325 grit.....</b>	<b>32</b>
<b>514-9-14T Diamond Stones, 270/325 grit.....</b>	<b>32</b>
<b>514-9-14Z Diamond Stones, 270/325 grit.....</b>	<b>32</b>
<b>514-9-14E Diamond Stones, 325/400 grit.....</b>	<b>33</b>
<b>514-9-14Q Diamond Stones, 325/400 grit .....</b>	<b>33</b>
<b>514-9-14X Diamond Stones, 325/400 grit.....</b>	<b>33</b>



**514-9-14V Diamond Stones, 400 grit..... 33**

**514-9-14C Diamond Stones, 500 grit ..... 33**

**514-9-14P Diamond Stones, 500 grit..... 34**

**514-9-14D Diamond Stones, 325/400 grit ..... 34**

**514-9-14U Diamond Stones, 500 grit ..... 34**

**514-9-14L Diamond Stones, 550 grit..... 34**

**514-9-14N Diamond Stones, 550 grit ..... 34**

**514-9-14G Diamond Stones, 600 grit ..... 35**

**514-9-14S Diamond Stones, 600 grit..... 35**

**514-9-21G Diamond Stones, 800 grit ..... 35**

**514-9-21H Diamond Stones, 1000 grit ..... 35**

**514-9-21J Diamond Stones, 1200 grit..... 35**

**514-9-35C CBN Stones, 320 grit..... 36**

**514-9-35D CBN Stones, 400 grit..... 36**

**514-9-35B CBN Stones, 600 grit..... 36**

**514-9-14H Brushes, for Plateau Finishing..... 37**

**514-9-14Y Brushes, for Plateau Finishing..... 37**

**514-9F Extra Large Precision Heavy Duty 4 Stone Holder Hone Head Assembly ..... 38**

**514-9-4D Sleeve Assembly ..... 38**

**514-9-25A Stone Holders ..... 39**

**514-9-25B Stone Holders ..... 39**

**514-9-25C Stone Holders ..... 39**

**514-9-25D Stone Holders ..... 39**

**514-9-25E Stone Holders ..... 39**

**514-9-25F Stone Holders..... 40**

**514-9-25G Stone Holders ..... 40**

**514-9-25H Stone Holders ..... 40**

**514-9-25J Stone Holders..... 40**

**514-9-25K Stone Holders ..... 41**

**514-9-25L Stone Holders..... 41**

**514-9-25M Stone Holders..... 41**

**514-9-25Q Stone Holders ..... 41**

**514-9-25R Stone Holders ..... 42**

**514-9-25S Stone Holders ..... 42**

**514-9-25T Stone Holders..... 42**





**514-9-25U Stone Holders ..... 43**

**514-9-25N Stone Holders ..... 43**

**514-9-25P Stone Holders ..... 43**

**514-9N Hone Head, Single Stage (12 Stone)..... 44**

**110-171-01 Single Stage Diamond Stones ..... 44**

**110-171-02 Single Stage Diamond Stones ..... 44**

**110-171-03 Single Stage Diamond Stones ..... 44**

**LO-6568-161 Hone Head, Single Stage (6 Stone) ..... 45**

**110-174-01 Diamond Stones ..... 45**

**LO-6568-160 Hone Head, Single Stage..... 46**

**110-173-01 Diamond Stones ..... 46**

**514-9-18P Special Red Finish Diamonds ..... 47**

**514-9-18N Silicone Abrasive Exposing Stones ..... 47**

**514-9-21 Polishing Felt Pads ..... 47**

**514-9-21F Silicone Paste..... 47**

**Optional Measuring Equipment ..... 48**

**201 Mitutoyo Surface Tester SurfTest 201 ..... 48**

**514-8-27 Stone Depth Scale and Holder Assembly (inch) ..... 48**

**514-8-27F Stone Depth Scale and Holder Assembly (metric) ..... 48**

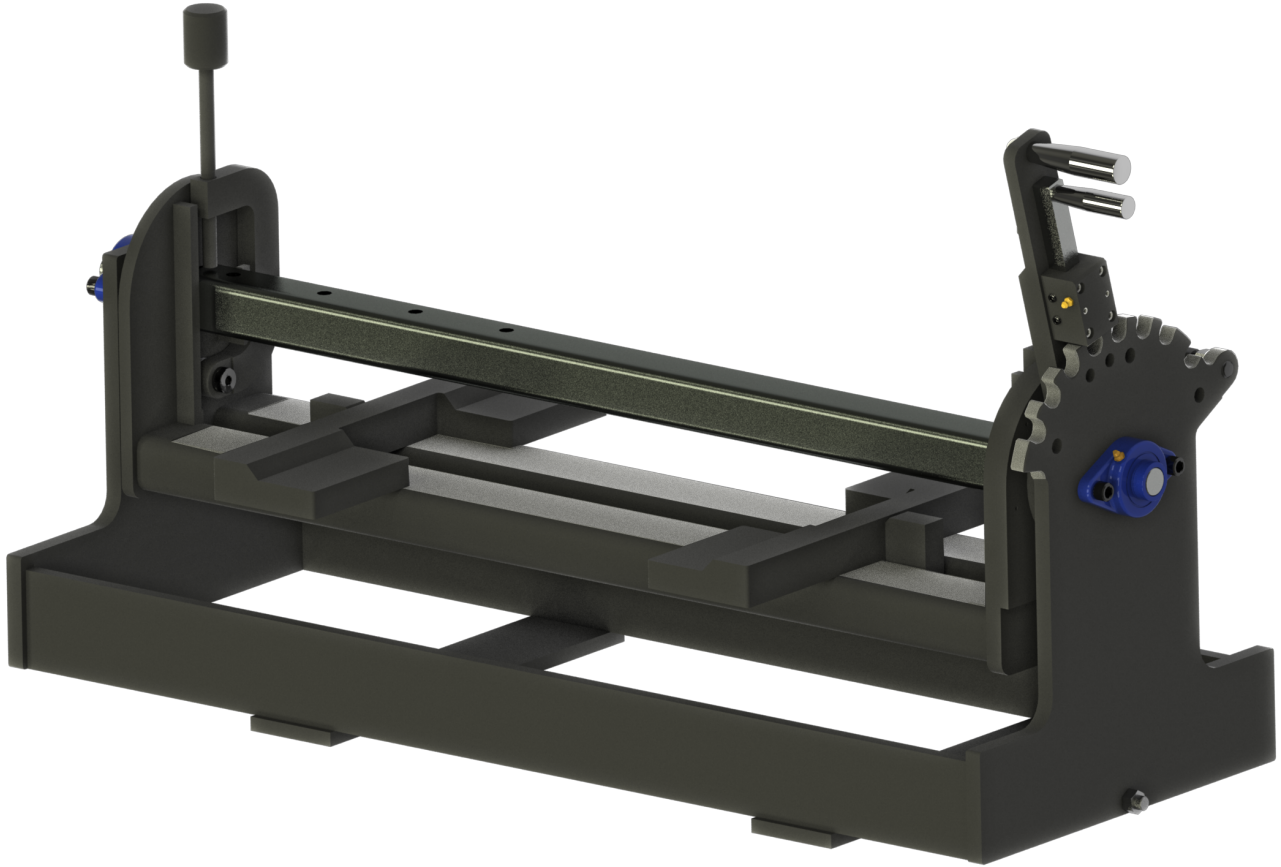
**Adapter for Pin Honing Mandrels ..... 49**

**514-9V Adapter ..... 49**

## Optional Fixturing

### 514-7A Manual Indexable Roll Over Fixture

For small to medium size In-line and V Blocks up to 31" (787mm) overall length



**514-7-14E 2" 50.8mm Small Diameter Main Line Bar**

For 514-7A

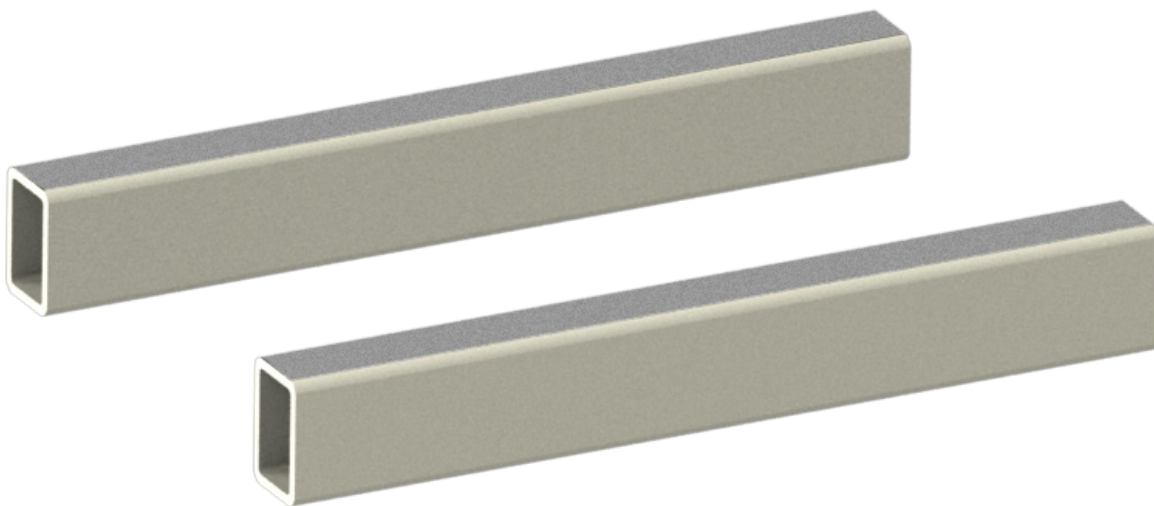
**502-1-30H Clamp Arm Assembly**

Set of 2, for blocks without main caps when using manual Roll Over Fixture and large in-line blocks without roll over fixture, max length of block 50" 1270mm

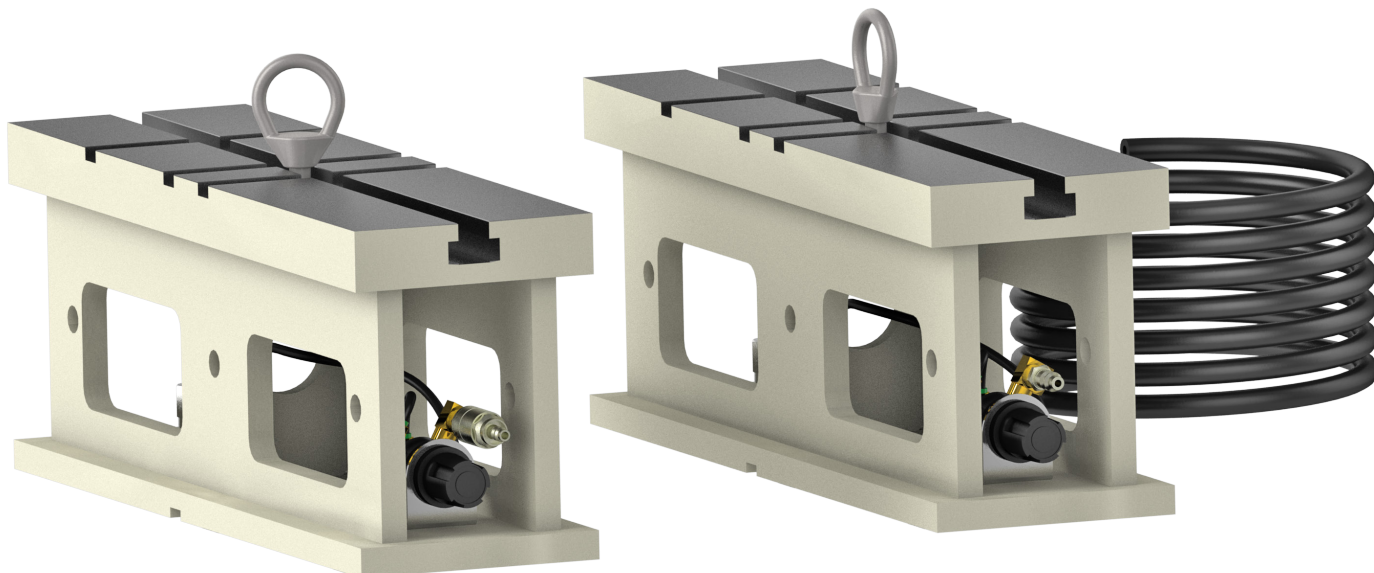


**11115 2" (50mm) X 3" (75mm) Parallels**

For general purpose machine work such as setting up small in-line blocks such as motorcycle or small single cylinders such as Harley

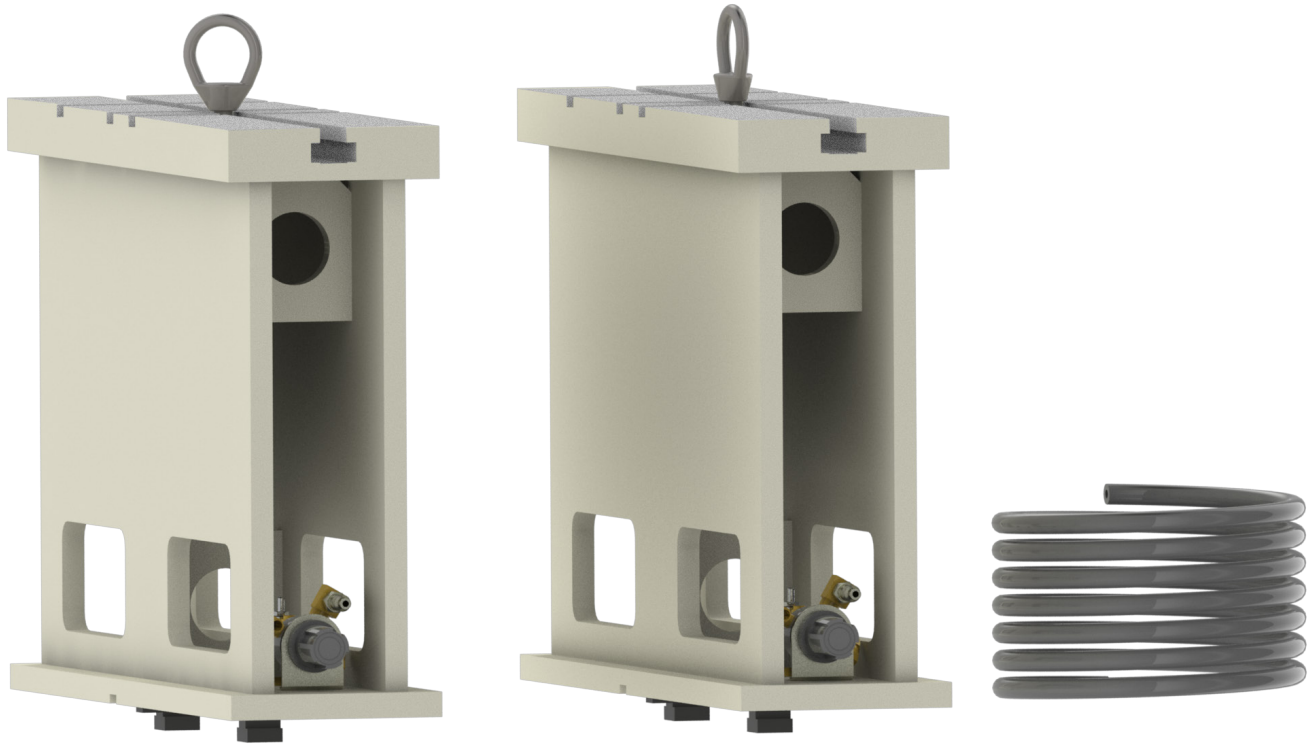
**11112 Universal 8" (203mm) Heavy Duty T-Slot Parallels**

For general purpose machine work such as setting up small in-line blocks such as motorcycle or small single cylinders such as Harley



**11114 Universal 16" (405mm) Heavy Duty T-Slot Parallels**

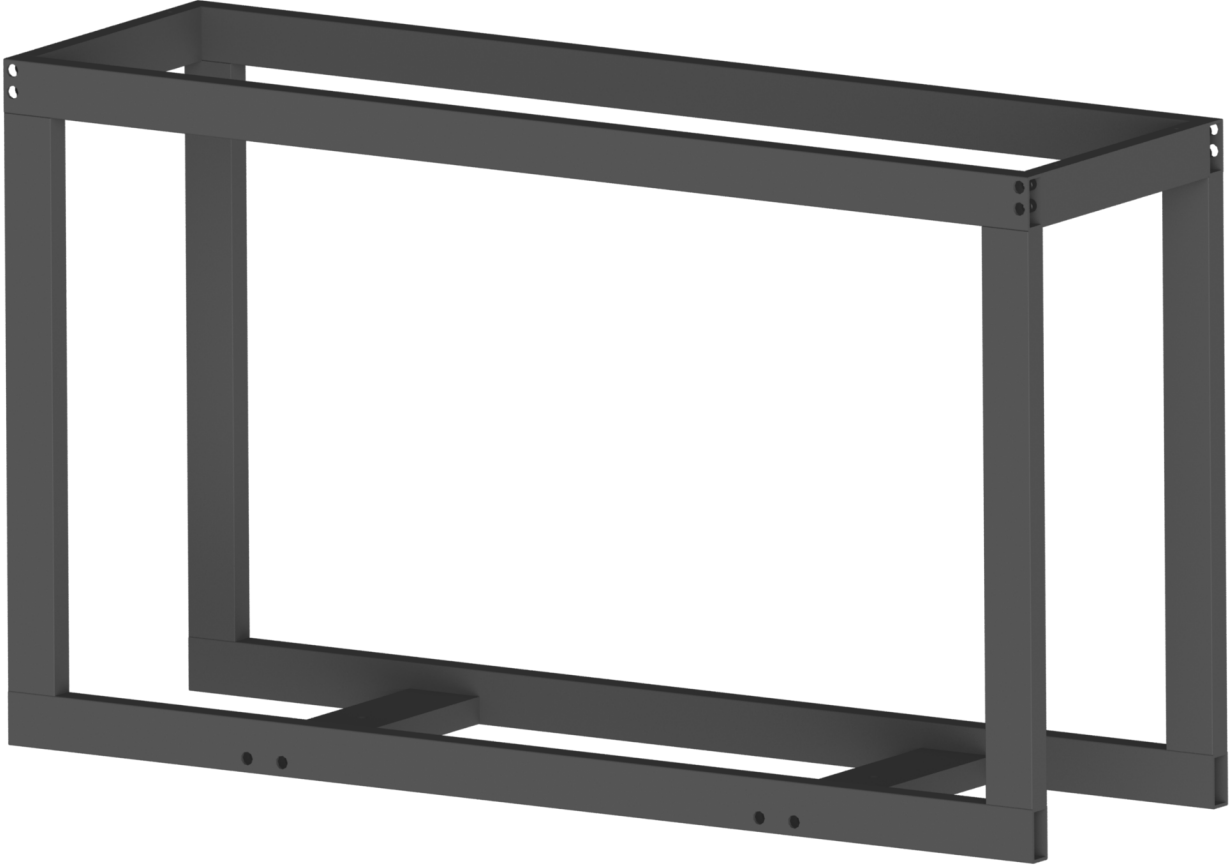
For general purpose machine work such as setting up small in-line blocks such as motorcycle or small single cylinders such as Harley



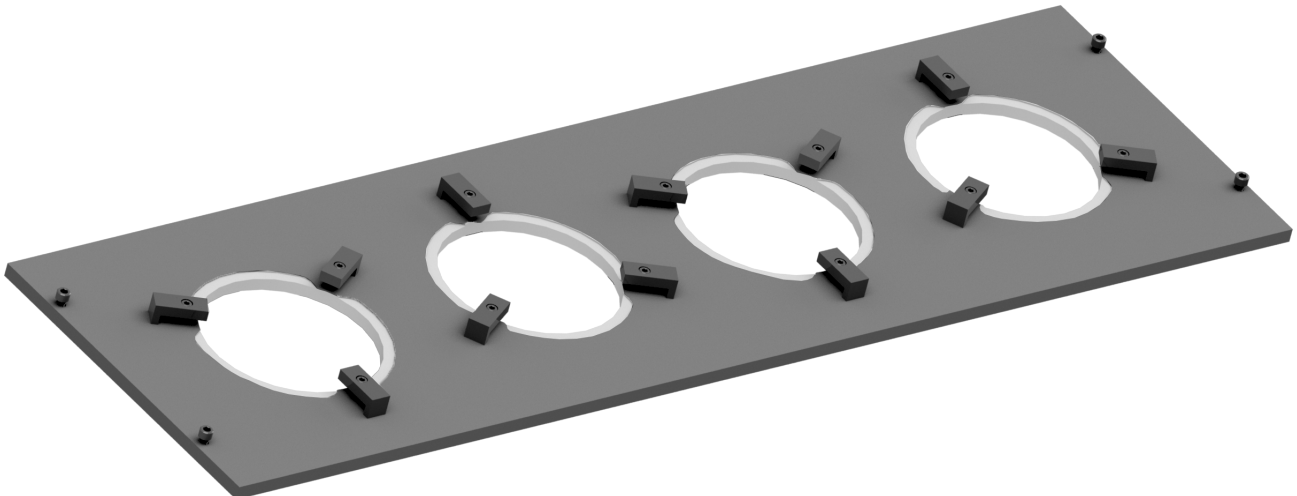
## Fixture for Honing Multiple Cylinder Liners (4 Liners)

### 514-11-5 Cylinder Liner Honing Fixture

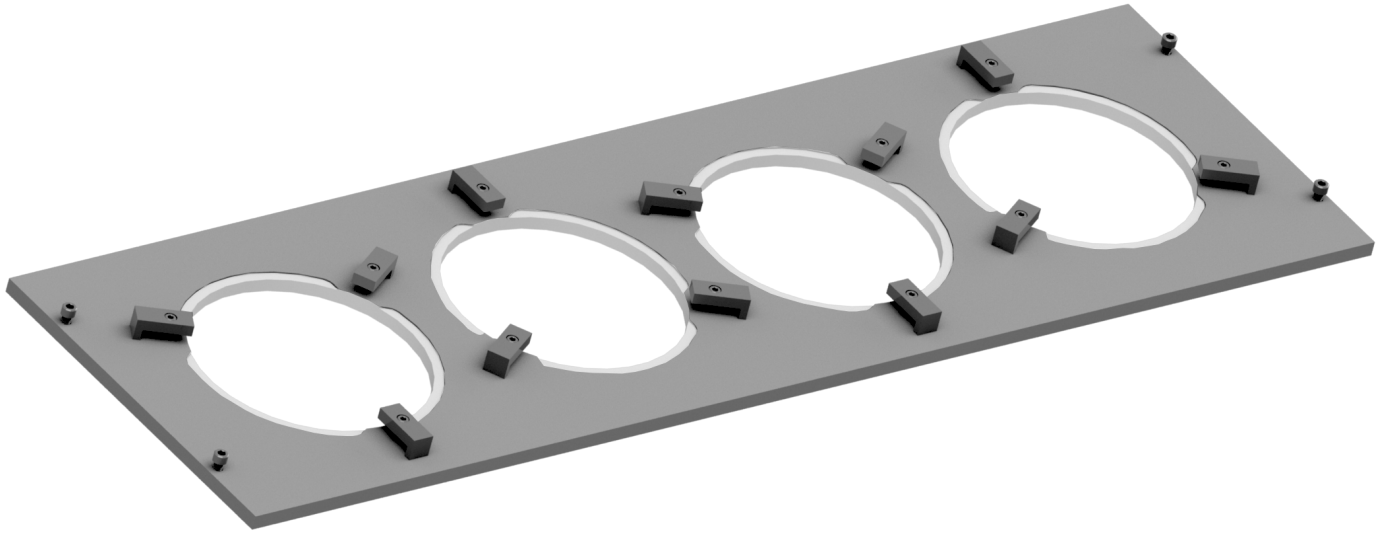
(Note: Must order Fixture Plate Separately)



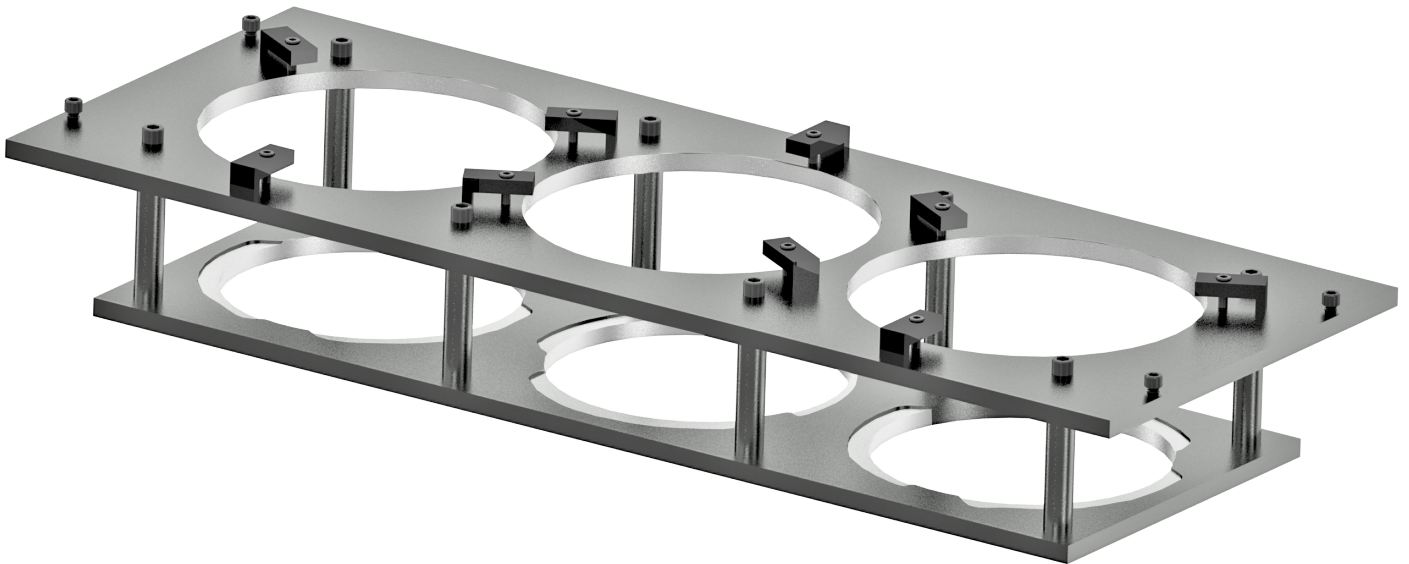
### 514-11-6 Fixture Plate, CAT 3400



**514-11-7 Fixture Plate, CAT 3500**



**514-11-4 Fixture Plate, CAT C175**



## Optional Coolant and Filter Equipment

### 514-4-71C Synthetic Coolant

(for use with diamond stones) 5 gal (20 liter) (mix with water 20:1)



### 514-4-71D Coolant Refractor

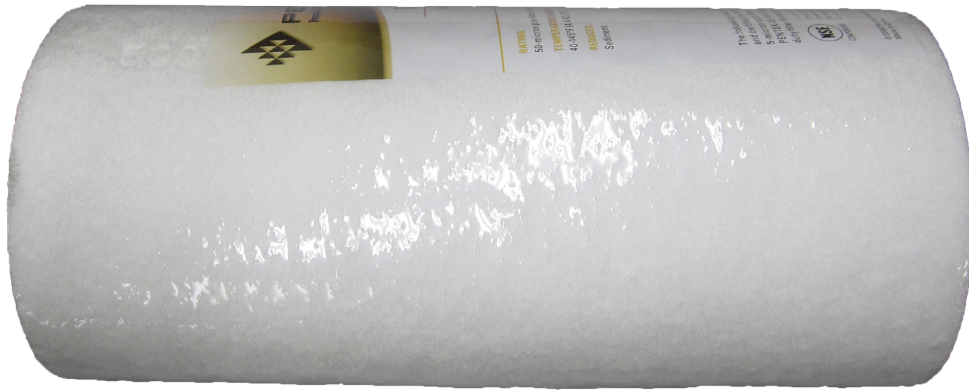
(for measuring synthetic coolant to water mix ratio)





**514-2-42C Dual Gradient 50-5 Micron Replacement Filter Cartridge**

For standard filter system



**514-2-42A Cannister Magnetic Filter System**

Lifetime magnetic filter removes metal particles. Servicable for lifetime of use.



## Optional Rottler Precision Hone Heads, Sleeves and Stone Holders

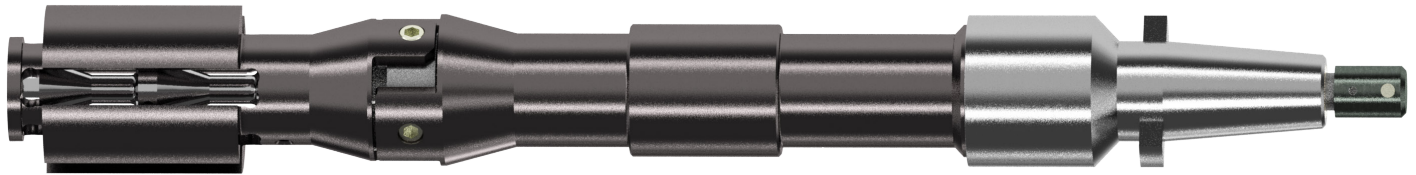
Bore diameter ranges listed following are with .312" (7.92mm) height diamond stones. For smaller diameter range, .200" (5.2mm) height diamond stones should be used.

### Medium 4 Stone Holder Hone Head 2.34 - 3.05" (59.44 - 77.47mm) Bore Diameter Range

#### 514-9J Medium Rottler Precision 4 Stone Holder Hone Head Assembly

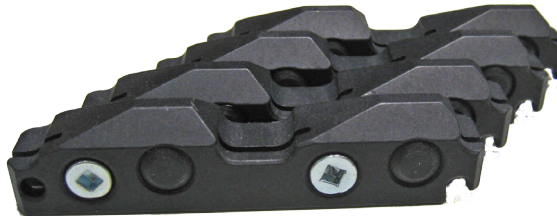
Includes integral sleeve without stone holders - H80 Series Quick Change. Medium hone head available only with 4 stones holders.

Bore diameter ranges listed following are with .312" (7.92mm) height diamond stones. For smaller diameter range, .200" (5.2mm) height diamond stones should be used.



#### 514-10-13A Stone Holders

2.34 - 2.45" (59.44 - 62.23mm), set of 4



#### 514-10-13F Stone Holders

2.44 - 2.55" (61.98 - 64.77mm), set of 4



#### 514-10-13B Stone Holders

2.54 - 2.65" (64.52 - 67.31mm), set of 4



**514-10-13G Stone Holders**

2.64 - 2.75" (61.37 - 64.16mm), set of 4



**514-10-13C Stone Holders**

2.74 - 2.85" (69.60 - 72.39mm), set of 4



**514-10-13H Stone Holders**

2.84 - 2.95" (66.45 - 69.24mm), set of 4



**514-10-13D Stone Holders**

2.94 - 3.05" (74.68 - 77.47mm), set of 4



Large Hone head is available for 4 and 6 Stone Holder applications as listed following:

**Large 6 Stone Holder Hone Head 2.770" - 7.38" (70.36mm - 187.45mm) Bore Diameter Range**

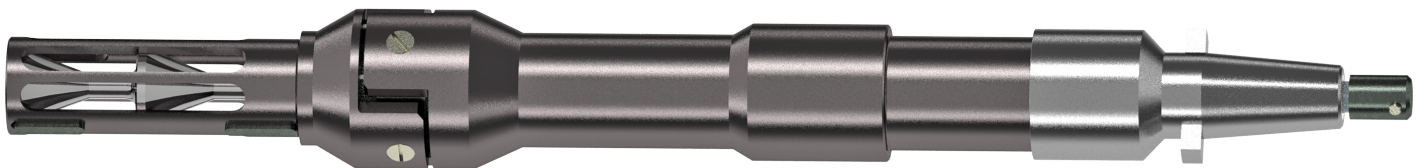
**514-9Q Large Rottler Precision Heavy Duty 6 Stone Holder Hone Head Assembly**

Without sleeves and stone holders - H80 Series Quick Change for cylinders up to 13" (330mm) long



**514-9S Large Rottler Precision Heavy Duty 6 Stone Holder Hone Head Assembly**

Without sleeves and stone holders - H80 Series Quick Change extended 2" (50mm) for cylinders longer than 13" (330mm)

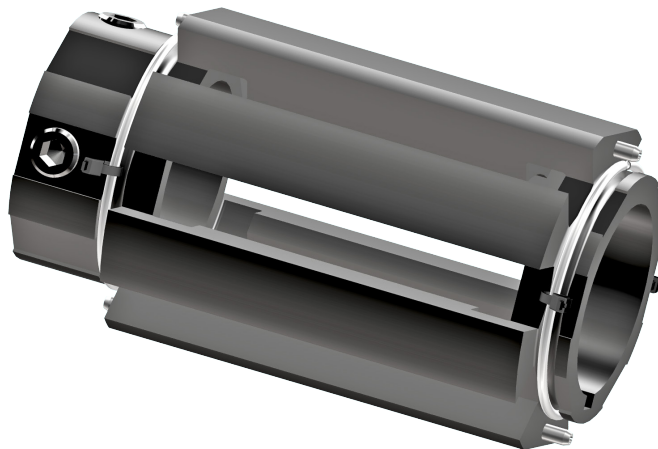


### Sleeves and Stone Holders for above Hone Head Assemblies

Bore diameter ranges listed following are with .312" (7.92mm) height diamond stones. For smaller diameter range, .200" (5.2mm) height diamond stones should be used.

**514-9-4E Sleeve Assembly**

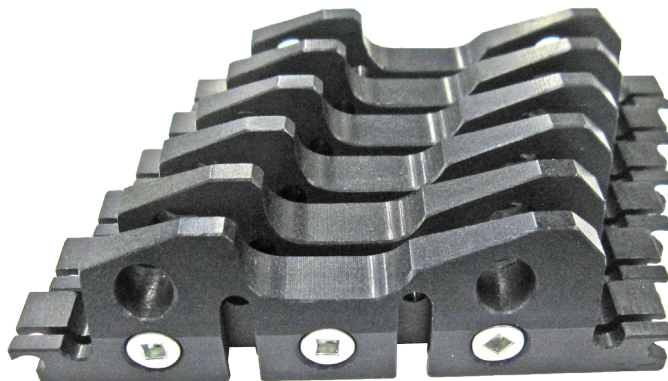
2.770" - 3.880" (70.36 - 98.55mm)



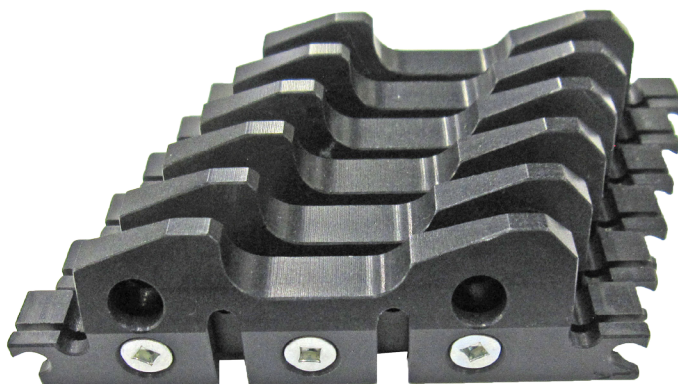
**514-9-31J Stone Holders**

2.990 - 3.44" (75.95 - 87.38mm) set of 6 (Requires Sleeve 514-9-4E)

Note: To hone diameter 2.770" (70.36mm) use .200 (5.1mm) height Stone Set with 514-9-6J Stone Holders

**514-9-31A Stone Holders**

3.165 - 3.630" (80.39 - 92.20mm) set of 6 (Requires Sleeve 514-9-4E)

**514-9-31B Stone Holders**

3.415 - 3.880" (86.74 - 98.55mm) set of 6 (Requires Sleeve 514-9-4E)



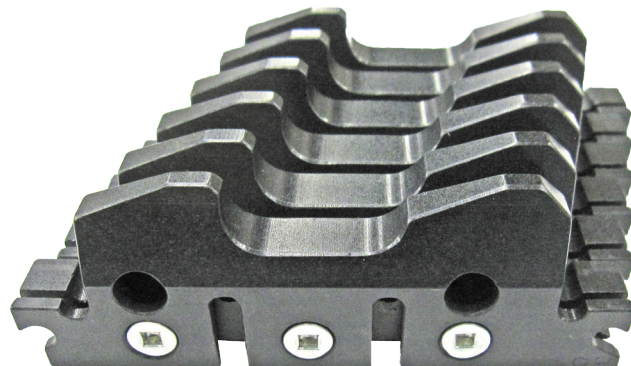
**514-9-4F Sleeve Assembly**

3.500 - 4.670" (88.00 - 118.62mm)



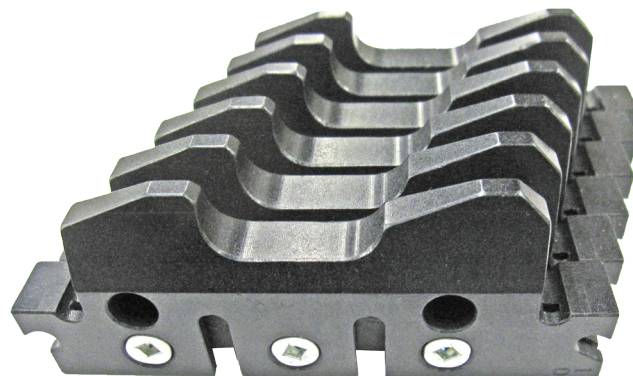
**514-9-31C Stone Holders**

3.665 - 4.130" (93.09 - 104.90mm) set of 6 (Requires Sleeve 514-9-4F)



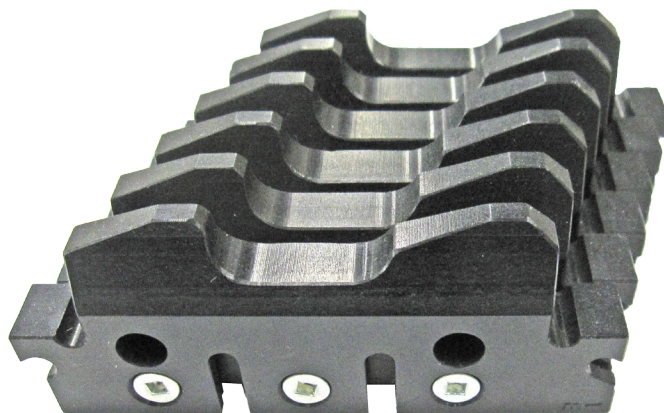
**514-9-31D Stone Holders**

3.915 - 4.380" (99.44 - 111.25mm) set of 6 (Requires Sleeve 514-9-4F)



**514-9-31E Stone Holders**

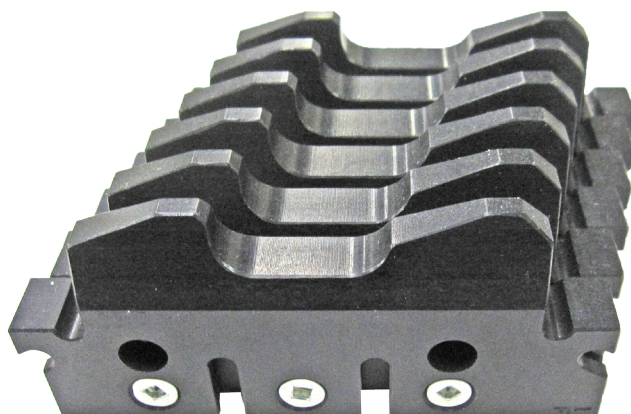
4.165 - 4.630" (105.79 - 117.60mm) set of 6 (Requires Sleeve 514-9-4F)

**514-9-4G Sleeve Assembly**

4.250 - 7.380" (107.95 - 187.45mm)

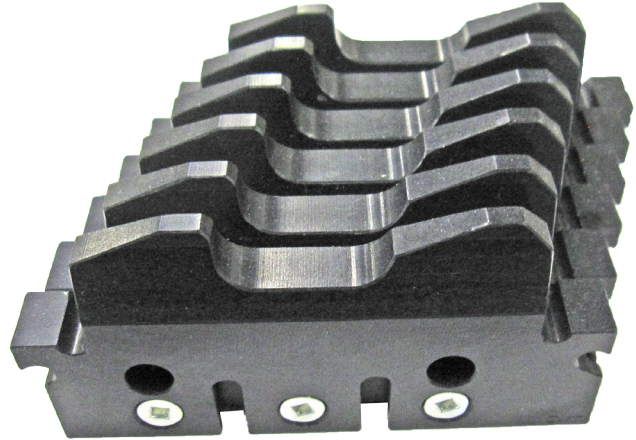
**514-9-31F Stone Holder**

4.415 - 4.880" (112.14 - 123.95mm) set of 6 (Requires Sleeve 514-9-4G)

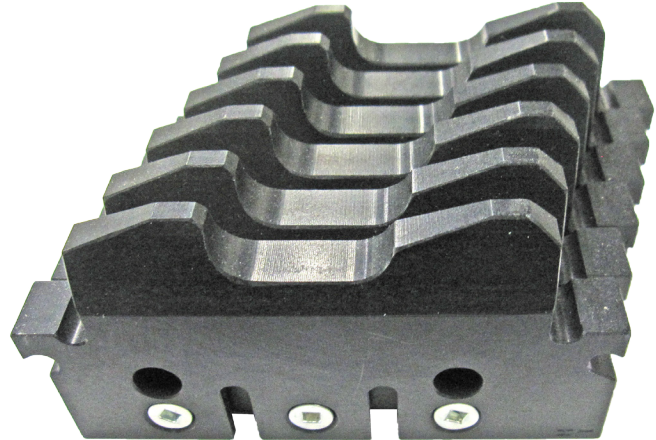


**514-9-31G Stone Holder**

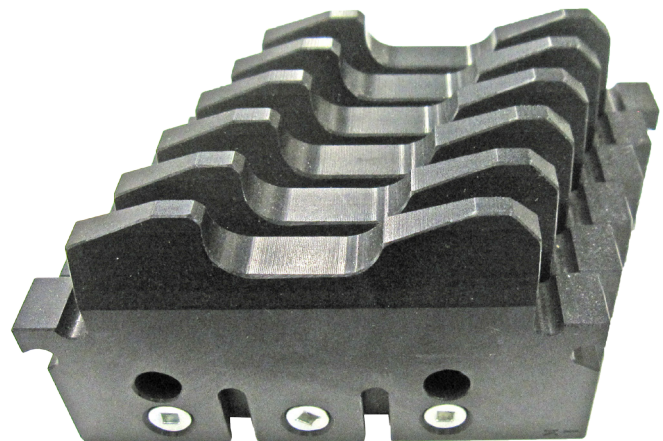
4.665 - 5.130" (118.49 - 130.30mm) set of 6 (Requires Sleeve 514-9-4G)

**514-9-31H Stone Holder**

4.915 - 5.380" (124.84 - 136.65mm) set of 6 (Requires Sleeve 514-9-4G)

**514-9-31K Stone Holder**

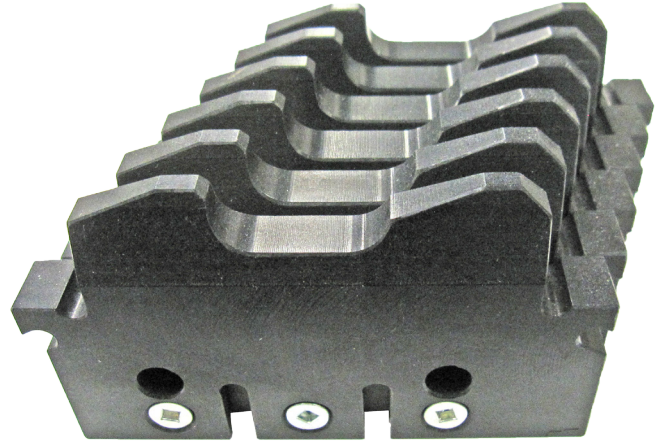
5.165 - 5.630" (131.19 - 143.00mm) set of 6 (Requires Sleeve 514-9-4G)





**514-9-31L Stone Holder**

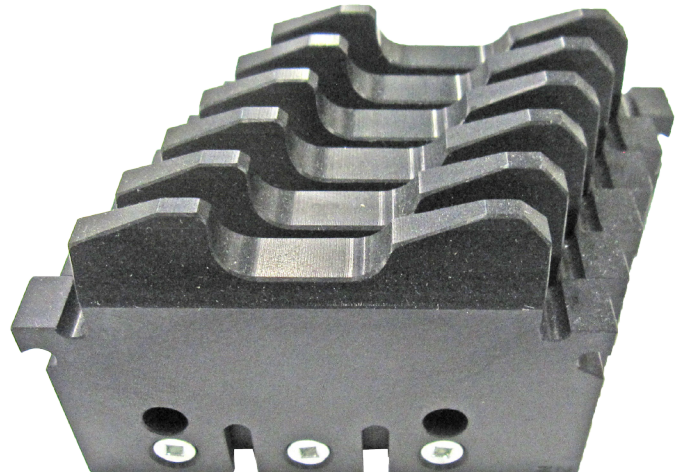
5.415 - 5.880" (137.54 - 149.35mm) set of 6 (Requires Sleeve 514-9-4G)

**514-9-31M Stone Holder**

5.665 - 6.130" (143.89 - 155.70mm) set of 6 (Requires Sleeve 514-9-4G)

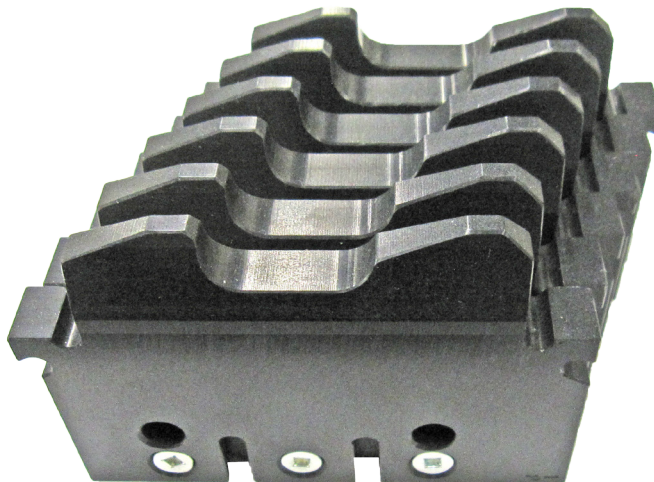
**514-9-31N Stone Holder**

5.915 - 6.380" (150.24 - 162.05mm) set of 6 (Requires Sleeve 514-9-4G)



**514-9-31P Stone Holder**

6.165 - 6.630" (156.59 - 168.40mm) set of 6 (Requires Sleeve 514-9-4G)

**514-9-31Q Stone Holder**

6.415 - 6.880" (162.94 - 174.75mm) set of 6 (Requires Sleeve 514-9-4G)

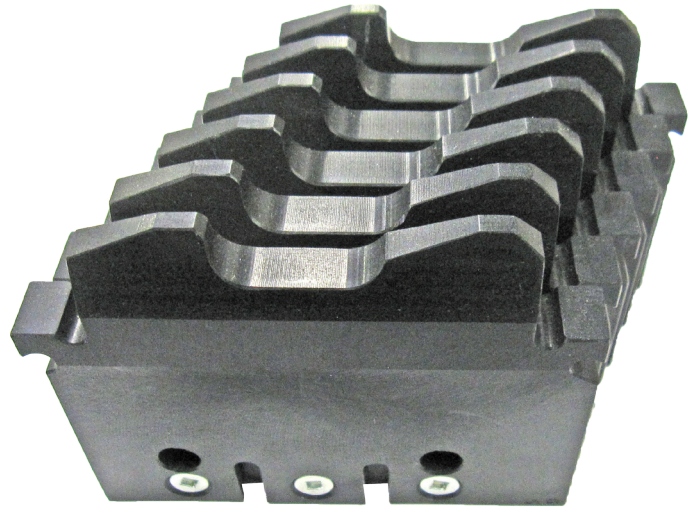
**514-9-31R Stone Holder**

6.665 - 7.130" (169.29 - 181.10mm) set of 6 (Requires Sleeve 514-9-4G)



**514-9-31S Stone Holder**

6.915 - 7.380" (175.64 - 187.45mm) set of 6 (Requires Sleeve 514-9-4G)



**Diamond Abrasives for Rottler Precision 6 Stone Holder Hone Heads**

NOTE: Ra - Roughness Average. Value before Ra is in micro inches. Value in brackets um is micro meters. Long designates length of stone. Height designated thickness of stone.

**Diamond Stones, .312 (7.90MM), Set of 6**

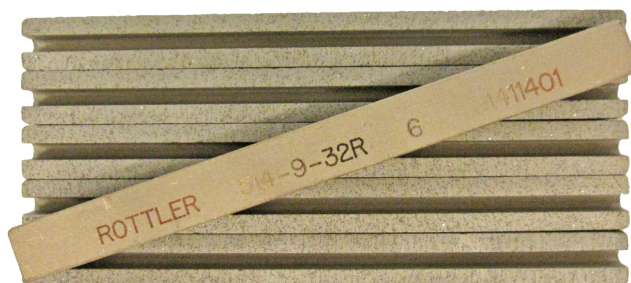
**514-9-32F Diamond Stones, 80 grit**

3" (76mm) long set of 6, 90 Ra, (2.25um)

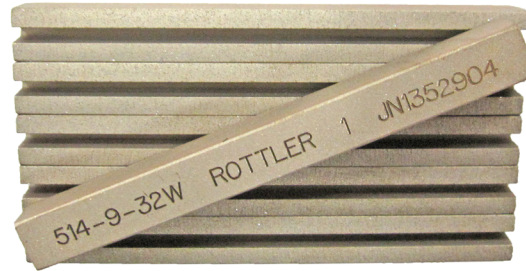


**514-9-32R Diamond Stones 80 grit**

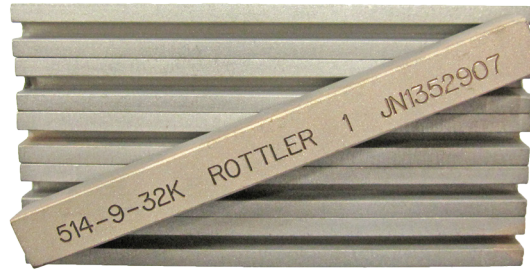
3.5" (89mm) long set of 6, 90 Ra, (2.25um)



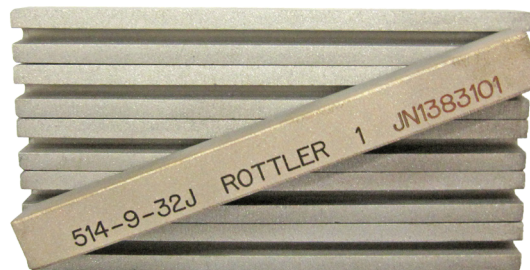
**514-9-32W Diamond Stones, 140/170 grit**  
 3" (76mm) long set of 6, 50-75 Ra, (1.25 - 1.875um)



**514-9-32K Diamond Stones, 170/200 grit**  
 3" (76mm) long set of 6, 45-60 Ra, (1.125 - 1.5um)



**514-9-32J Diamond Stones, 270/325 grit**  
 3" (76mm) long set of 6, 35-45 Ra, (.875 - 1.125um)



**514-9-32E Diamond Stones, 325/400 grit**  
 3" (76mm) long set of 6, 24-30 Ra, (.6 - .75um)



**514-9-33K Diamond Stones, 325/400 grit**  
 4" (102mm) long set of 6, 24-30 Ra, (.6 - .75um)



**514-9-32C Diamond Stones, 500 grit**  
3" (76mm) long set of 6, 18-22 Ra, (.45 - .55um)



**514-9-32L Diamond Stones, 550 grit**  
3" (76mm) long set of 6, 15-19 Ra, (.375 - .475)



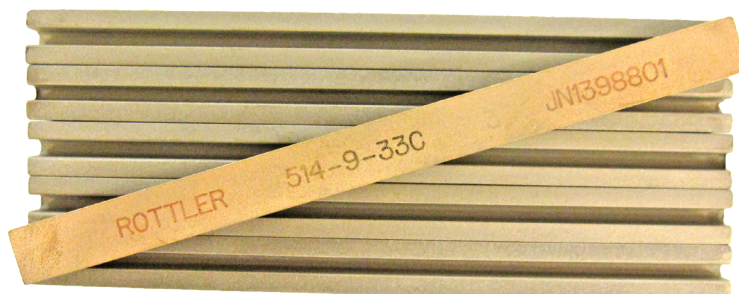
**514-9-32G Diamond Stones, 600 grit**  
3" (76mm) long set of 6, 8-12 Ra, (.2 - .3um)



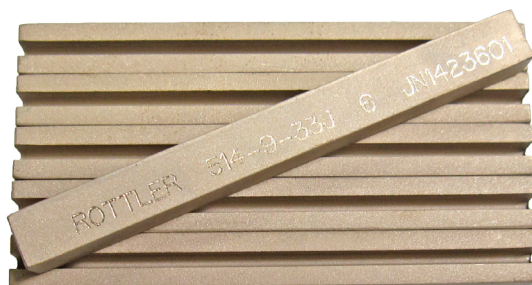
**514-9-33 Diamond Stones, 800 grit**  
3" (76mm) long set of 6



**514-9-33C Diamond Stones, 800 grit**  
4" (102mm) long set of 6



**514-9-33J Diamond Stones, 1200 grit**  
3" (76mm) long set of 6



**Diamond Stones, .200 (5.08MM), Set of 6**

**514-9-33B Diamond Stones, 270/325 grit**  
3.5" (89mm) long set of 6, 35-45 Ra,



**514-9-32D Diamond Stones, 325/400 grit**  
3" (76mm) long set of 6, 18-22 Ra, 2.795 bore



**514-9-33A Diamond Stones, 800 grit**  
3.5" (89mm) long set of 6



**CBN Stones for Super Finishing with Rottler Precision 4 and 6 Stone Holder Hone Heads**

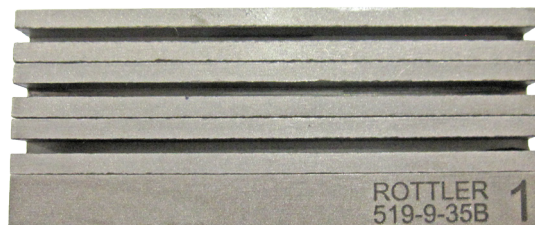
**514-9-35C CBN Stones, 320 grit**  
3" (76mm) long set of 4, for super finishing



**514-9-35D CBN Stones, 400 grit**  
3" (76mm) long set of 4, for super finishing

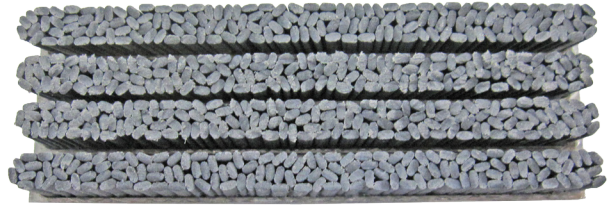


**514-9-35B CBN Stones, 600 grit**  
3" (76mm) long set of 4, for super finishing

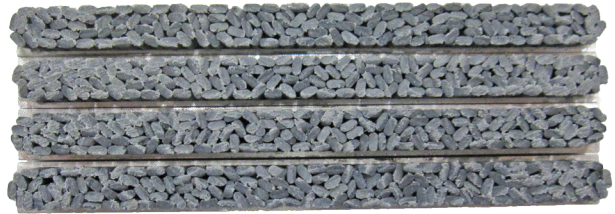


**Brushes for Plateau Finishing with Rottler Precision 4 and 6 Stone Holder Hone Heads****514-9-14H Brushes, for Plateau Finishing**

.550" (14mm) height, 3 1/2" (89mm) long, requires one or two size smaller stone holder compared to .312" (7.90mm) height diamond stone. Set of 4

**514-9-14Y Brushes, for Plateau Finishing**

.395" (10mm) height, 3 1/2" (89mm) long, requires same or one size smaller stone holder compared to .312" (7.90mm) height diamond stone. Set of 4

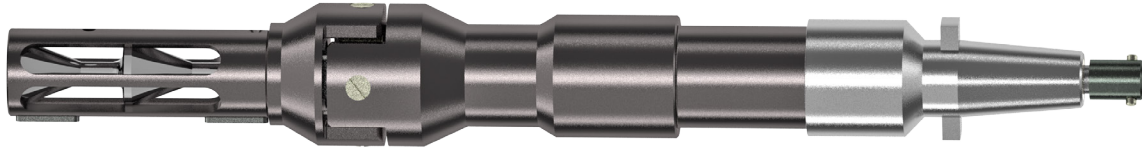




## Large 4 Stone Holder Hone Head 2.770" - 7.38" (70.36mm - 187.45mm) Bore Diameter Range

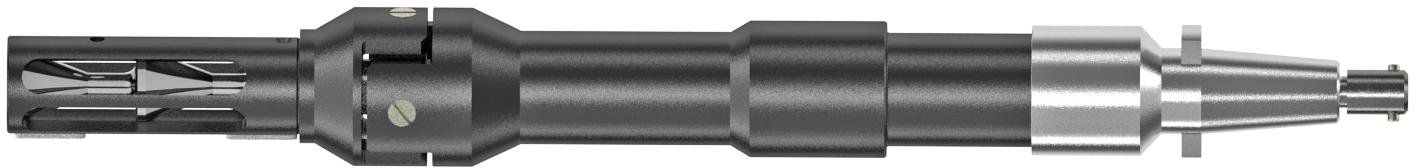
### 514-9P Large Rottler Precision Heavy Duty 4 Stone Holder Hone Head Assembly

Without sleeves and stone holders - H80 Series Quick Change for cylinders up to 13" (330mm) long



### 514-9R Large Rottler Precision Heavy Duty 4 Stone Holder Hone Head Assembly

Without sleeves and stone holders - H80 Series Quick Change extended 2" (50mm) for cylinders longer than 13" (330mm)

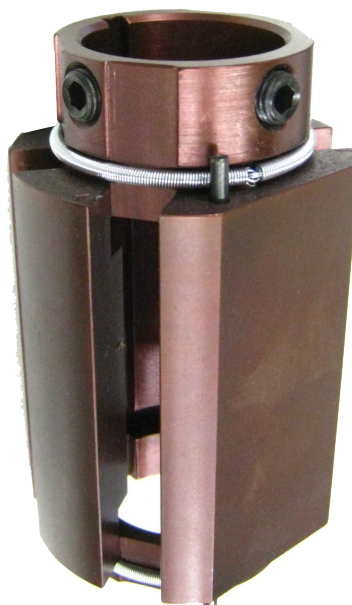


## Sleeves and Stone Holders for above Hone Head Assemblies

Bore diameter ranges listed below are with .312" (7.92mm) height diamond stones. For smaller diameter range, .200" (5.2mm) height diamond stones should be used.

### 514-9-4A Sleeve Assembly

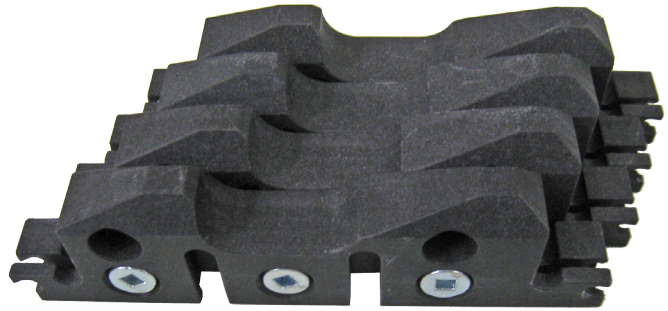
2.770" - 3.880" (70.36 - 98.55mm)



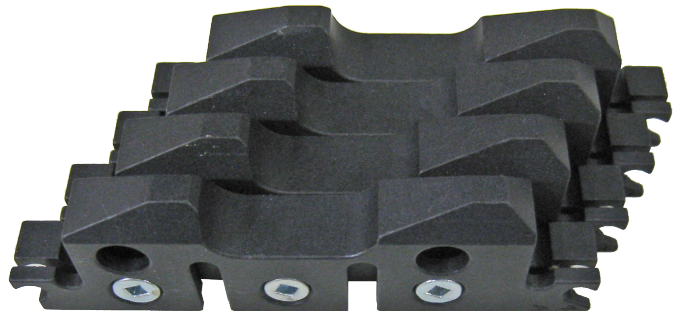
**514-9-6J Stone Holders**

2.990 - 3.44" (75.95 - 87.38mm) set of 4 (Requires Sleeve 514-9-4A)

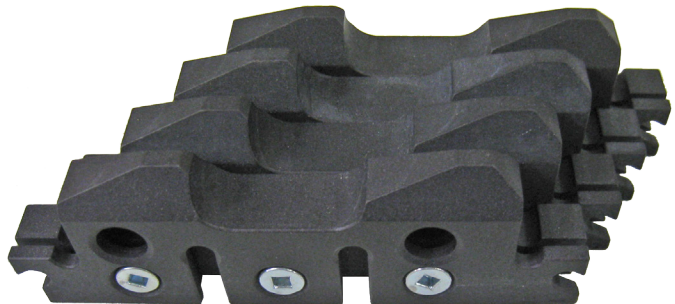
Note: To hone diameter 2.77" (70.36mm) use .200" (5.1mm) height Stone Set with 514-9-6J Stone Holders

**514-9-6A Stone Holders**

3.165 - 3.630" (80.39 - 92.20mm) set of 4 (Requires Sleeve 514-9-4A)

**514-9-6B Stone Holders**

3.415 - 3.880" (86.74 - 98.55mm) set of 4 (Requires Sleeve 514-9-4A)



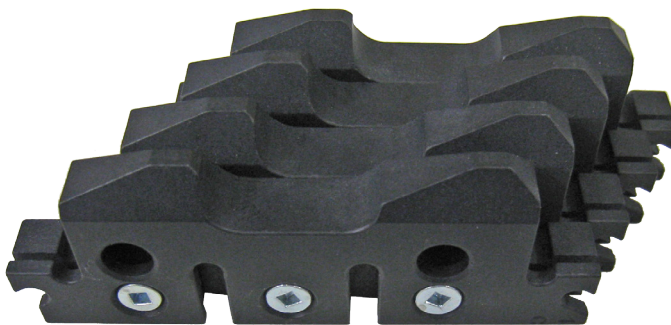
**514-9-4B Sleeve Assembly**

3.500 - 4.670" (88.00 - 118.62mm)



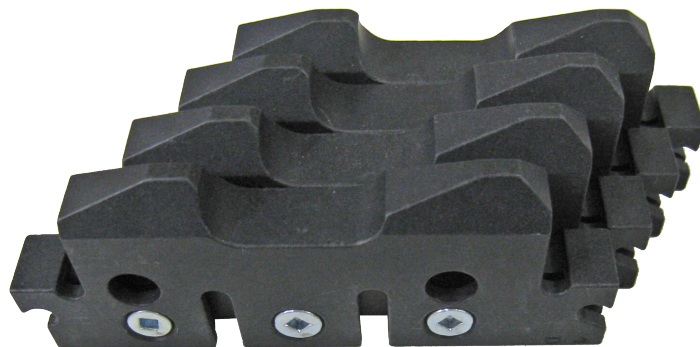
**514-9-6C Stone Holders**

3.665 - 4.130" (93.09 - 104.90mm) set of 4 (Requires Sleeve 514-9-4B)



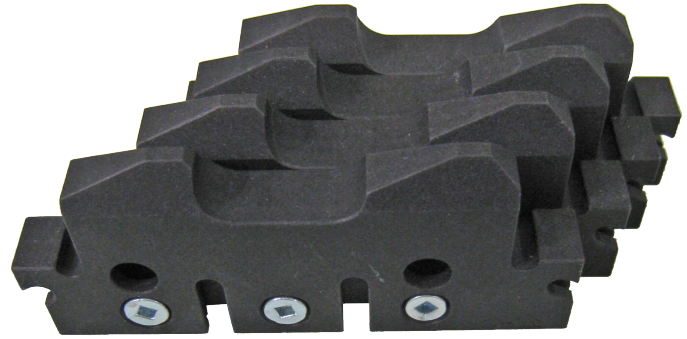
**514-9-6D Stone Holders**

3.915 - 4.380" (99.44 - 111.25mm) set of 4 (Requires Sleeve 514-9-4B)



**514-9-6E Stone Holders**

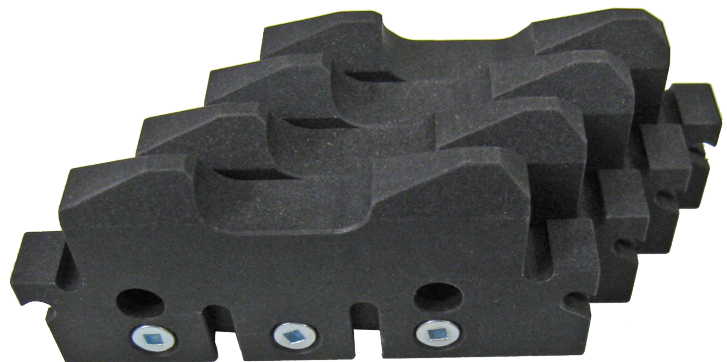
4.165 - 4.630" (105.79 - 117.60mm) set of 4 (Requires Sleeve 514-9-4B)

**514-9-4C Sleeve Assembly**

4.250 - 7.380" (107.95 - 187.45mm)

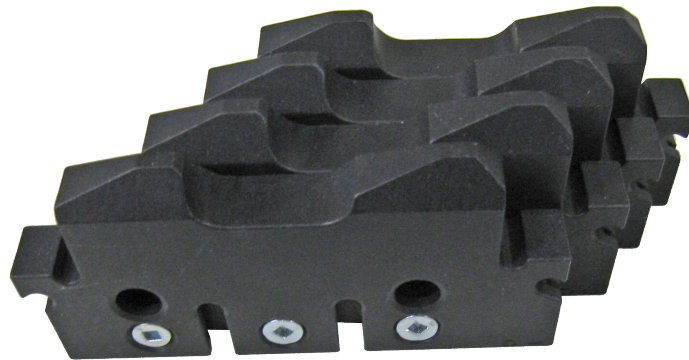
**514-9-6F Stone Holders**

4.415 - 4.880" (112.14 - 123.95mm) set of 4 (Requires Sleeve 514-9-4C)



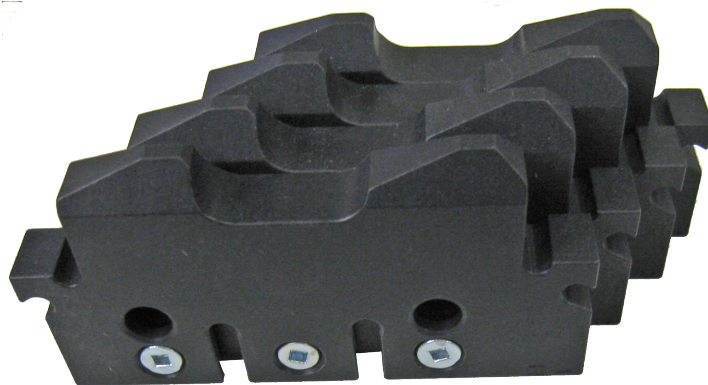
### 514-9-6G Stone Holders

4.665 - 5.130" (118.49 - 130.30mm) set of 4 (Requires Sleeve 514-9-4C)



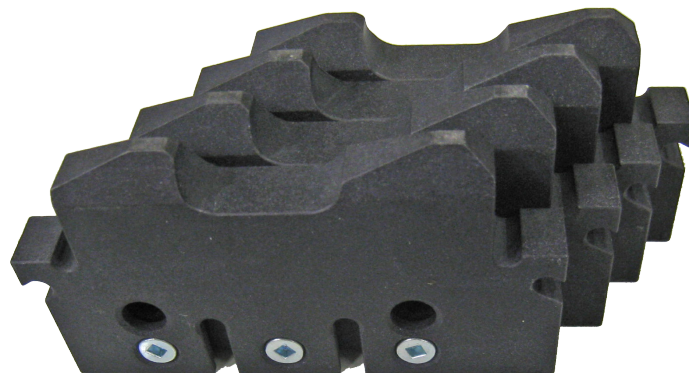
### 514-9-6H Stone Holders

4.915 - 5.380" (124.84 - 136.65mm) set of 4 (Requires Sleeve 514-9-4C)



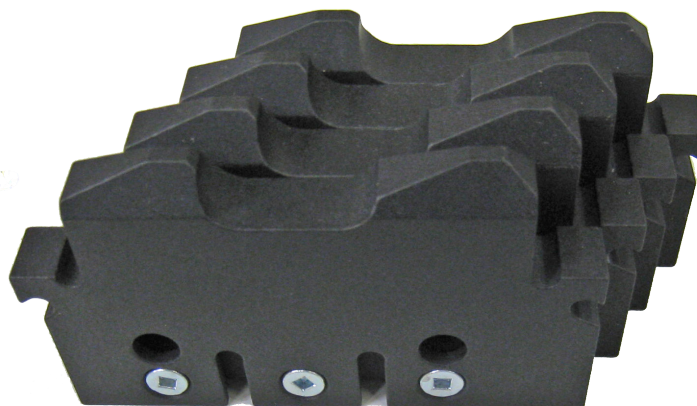
### 514-9-6K Stone Holders

5.165 - 5.630" (131.19 - 143.00mm) set of 4 (Requires Sleeve 514-9-4C)



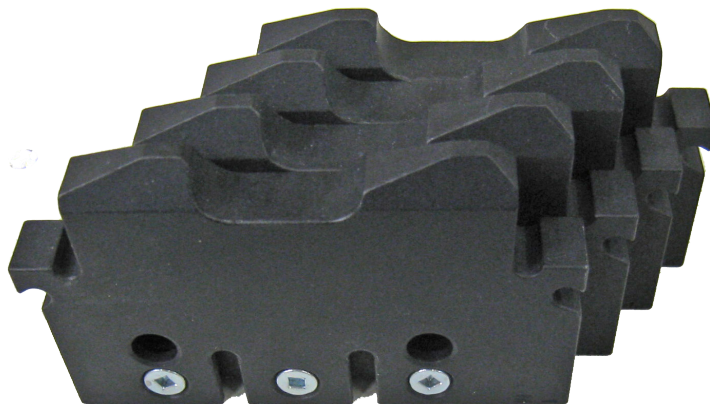
### 514-9-6L Stone Holders

5.415 - 5.880" (137.54 - 149.35mm) set of 4 (Requires Sleeve 514-9-4C)

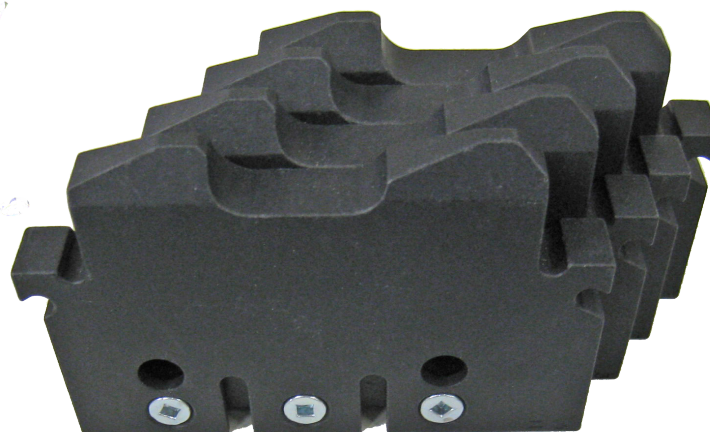


**514-9-6M Stone Holders**

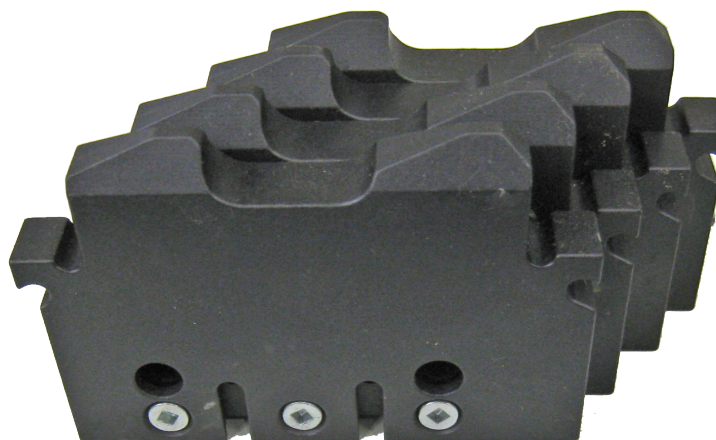
5.665 - 6.130" (143.89 - 155.70mm) set of 4 (Requires Sleeve 514-9-4C)

**514-9-6N Stone Holders**

5.915 - 6.380" (150.24 - 162.05mm) set of 4 (Requires Sleeve 514-9-4C)

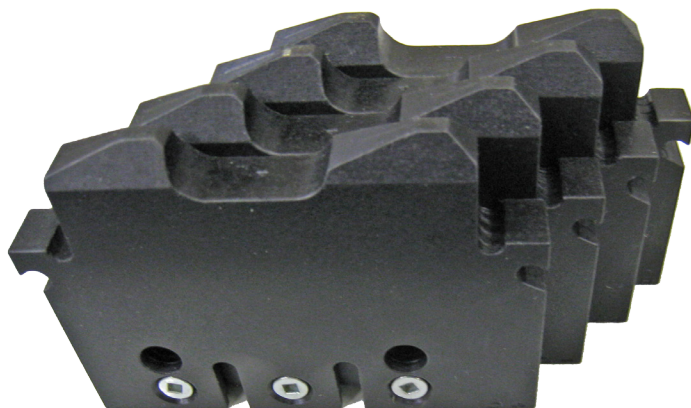
**514-9-6P Stone Holders**

6.165 - 6.630" (156.59 - 168.40mm) set of 4 (Requires Sleeve 514-9-4C)

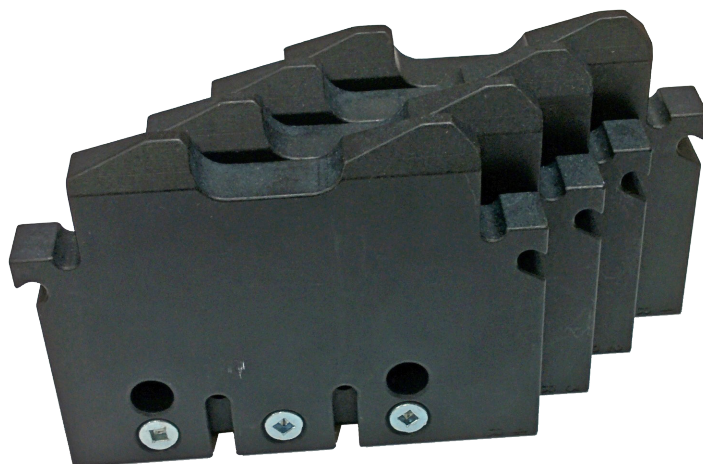


**514-9-6Q Stone Holders**

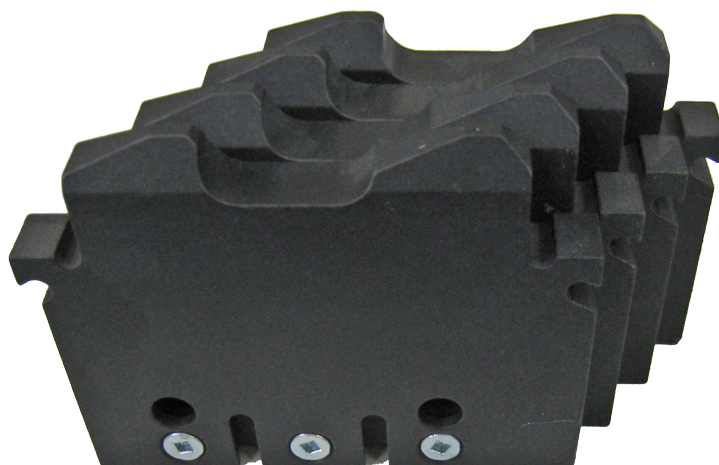
6.415 - 6.880" (162.94 - 174.75mm) set of 4 (Requires Sleeve 514-9-4C)

**514-9-6R Stone Holders**

6.665 - 7.130" (169.29 - 181.10mm) set of 4 (Requires Sleeve 514-9-4C)

**514-9-6S Stone Holders**

6.915 - 7.380" (175.64 - 187.45mm) set of 4 (Requires Sleeve 514-9-4C)



**Diamond Abrasives for Rottler Precision 4 Stone Holder Hone Heads**

NOTE: Ra - Roughness Average. Value before Ra is in micro inches. Value in brackets um is micro meters. Long designates length of stone. Height designated thickness of stone.

**Diamond Stones, .312" (7.90mm) Height, Set of 4**

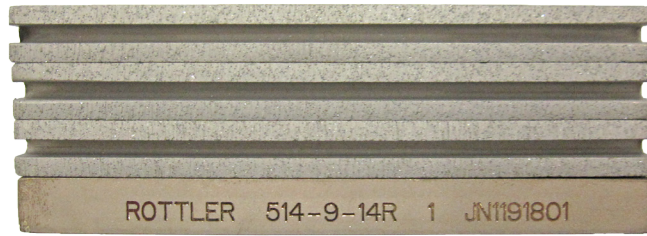
**514-9-14F Diamond Stones, 80 grit**

3" (76mm) long set of 4, 90Ra (2.25um), stock removal .004-.007/min.



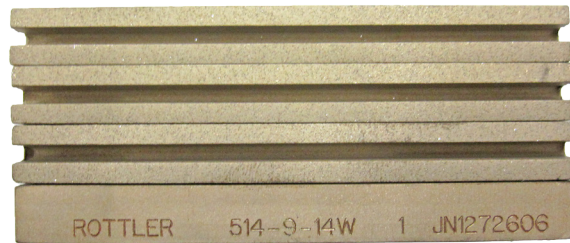
**514-9-14R Diamond Stones, 80 grit**

3 1/2" (89mm) long set of 4, 90Ra (2.25um), stock removal .004-.007/min. (.102 - .178mm)



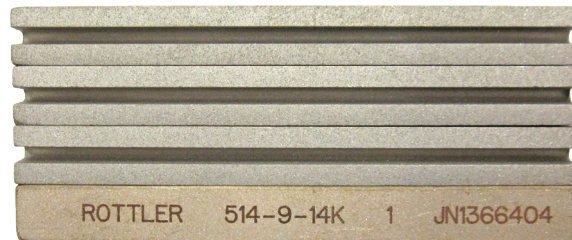
**514-9-14W Diamond Stones, 140/170 grit**

3" (76mm) long set of 4, 50-75Ra (1.25 - 1.875um)



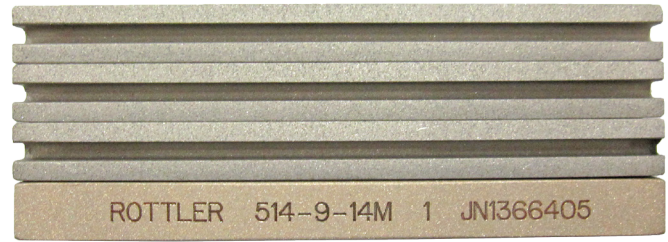
**514-9-14K Diamond stones, 170/200 grit**

3" (76mm) long set of 4, 45-60Ra (1.125 - 1.5um)





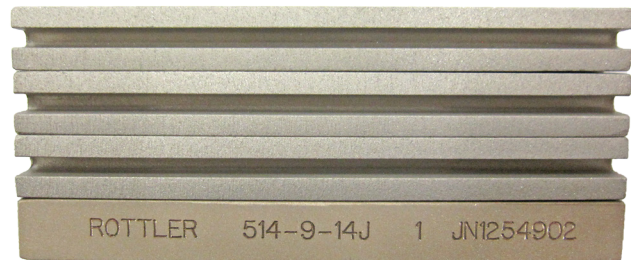
**514-9-14M Diamond Stones, 170/200 grit**  
 3 1/2" (89mm) long set of 4, 45-60Ra (1.125 - 1.5um)



**514-9-21M Diamond stones, 170/200 grit**  
 4" (102mm) long set of 4, 45-60 Ra, (1.125 - 1.5um)



**514-9-14J Diamond Stones, 270/325 grit**  
 3" (76mm) long set of 4, 35-45Ra (.875 - 1.125um)



**514-9-14T Diamond Stones, 270/325 grit**  
 3 1/2" (89mm) long set of 4, 35-45Ra (.875 - 1.125um)



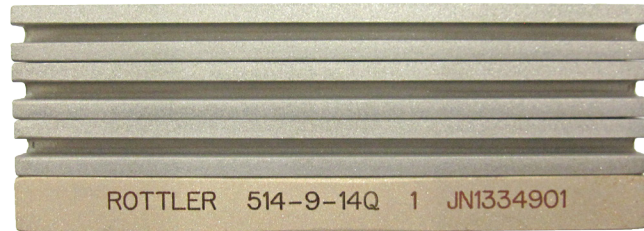
**514-9-14Z Diamond Stones, 270/325 grit**  
 4" (102mm) long set of 4, 35-45Ra (.875 - 1.125um)



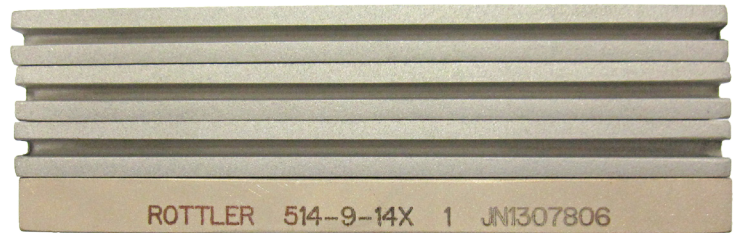
**514-9-14E Diamond Stones, 325/400 grit**  
 3" (76mm) long set of 4, 24-30Ra (.6 - .75um)



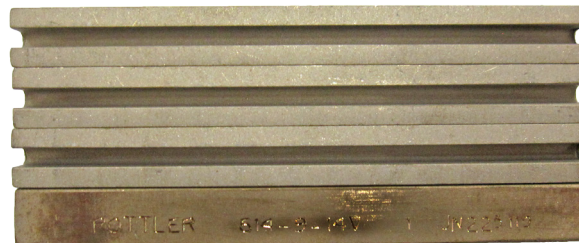
**514-9-14Q Diamond Stones, 325/400 grit**  
 3 1/2" (89mm) long set of 4, 24-30Ra (.6 - .75um)



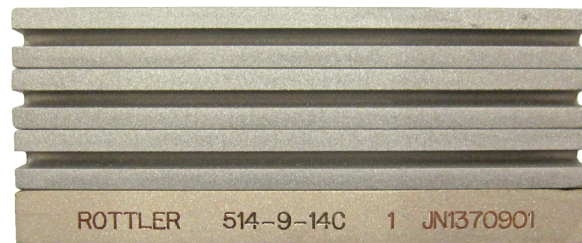
**514-9-14X Diamond Stones, 325/400 grit**  
 4" (102mm) long set of 4, 24-30Ra (.6 - .75um)



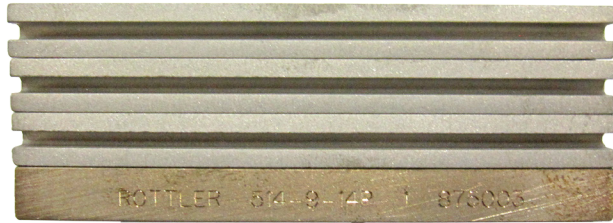
**514-9-14V Diamond Stones, 400 grit**  
 3" (76mm) long set of 4, 15-19Ra (.375 - .475um)



**514-9-14C Diamond Stones, 500 grit**  
 3" (76mm) long set of 4, 18-22Ra (.45 - .55um)



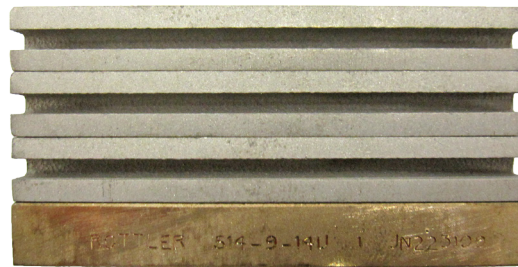
**514-9-14P Diamond Stones, 500 grit**  
 3-1/2" (89mm) long set of 4, 18-22Ra (.45 - .55um)



**514-9-14D Diamond Stones, 325/400 grit**  
 3" (76mm) long set of 4, 18-22Ra (.45 - .55um)  
 Special required for bores under 2.990" diameter  
 (75.94mm) .200" (5.1mm) Height



**514-9-14U Diamond Stones, 500 grit**  
 2 1/2" (64mm) long set of 4, 18-22Ra (.45 - .55um)



**514-9-14L Diamond Stones, 550 grit**  
 3" (76mm) long set of 4, 15-19Ra (.375 - .475um)



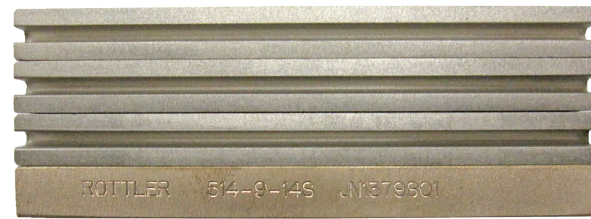
**514-9-14N Diamond Stones, 550 grit**  
 3 1/2" (89mm) long set of 4, 15-19Ra (.375 - .475um)



**514-9-14G Diamond Stones, 600 grit**  
3" (76mm) long set of 4, 8-12Ra (.2 - .3um)



**514-9-14S Diamond Stones, 600 grit**  
3 1/2" (89mm) long set of 4, 8-12Ra (.2 - .3um)



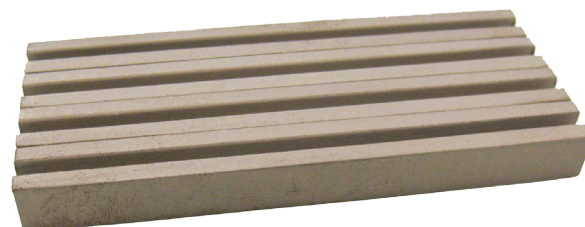
**514-9-21G Diamond Stones, 800 grit**  
3" (76mm) long set of 4



**514-9-21H Diamond Stones, 1000 grit**  
3" (76mm) long set of 4



**514-9-21J Diamond Stones, 1200 grit**  
3" (76mm) long set of 4



### CBN Stones for Super Finishing with Rottler Precision 4 and 6 Stone Holder Hone Heads

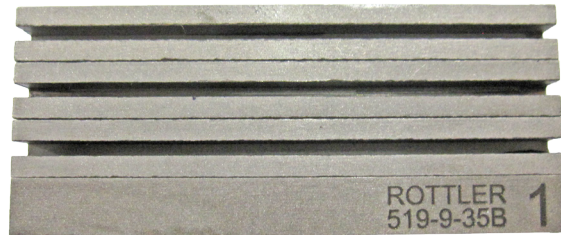
**514-9-35C CBN Stones, 320 grit**  
3" (76mm) long set of 4, for super finishing



**514-9-35D CBN Stones, 400 grit**  
3" (76mm) long set of 4, for super finishing



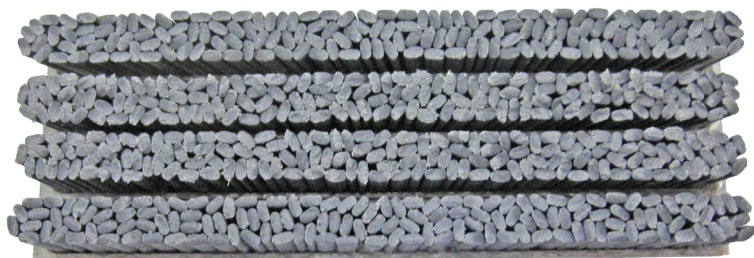
**514-9-35B CBN Stones, 600 grit**  
3" (76mm) long set of 4, for super finishing



**Brushes for Plateau Finishing with Rottler Precision 4 and 6 Stone Holder Hone Heads****514-9-14H Brushes, for Plateau Finishing**

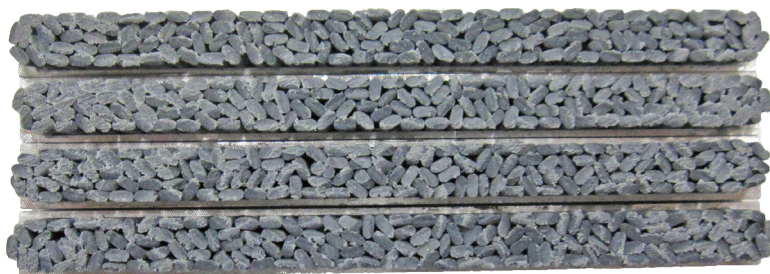
.550" (14mm) height, 3 1/2" (89mm) long. Set of 4

Requires one or two size smaller stone holder compared to .312" (7.90mm) height diamond stone.

**514-9-14Y Brushes, for Plateau Finishing**

.395" (10mm) height, 3 1/2" (89mm) long. Set of 4

Requires same or one size smaller stone holder compared to .312" (7.90mm) height diamond stone.



**Extra Large Hone Head 6.1 - 14" (155mm - 355mm)****514-9F Extra Large Precision Heavy Duty 4 Stone Holder Hone Head Assembly**

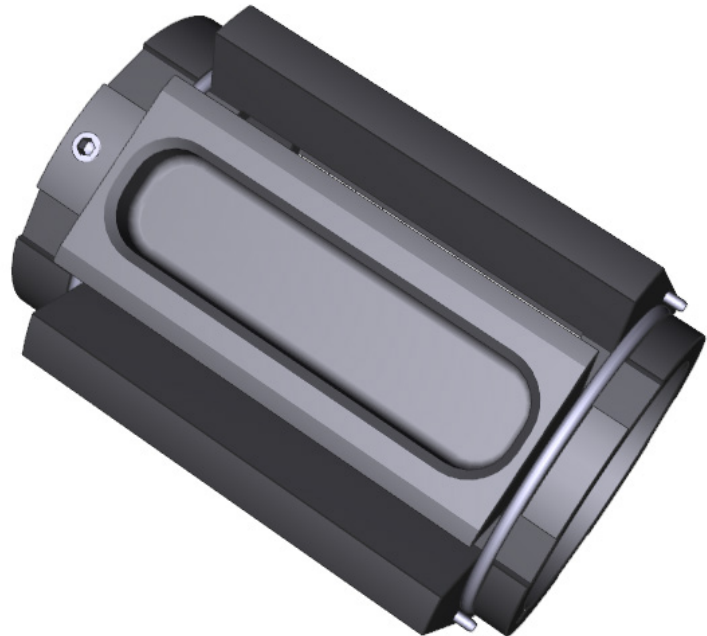
Without stone holders and sleeves - H80 Series with Quick Change



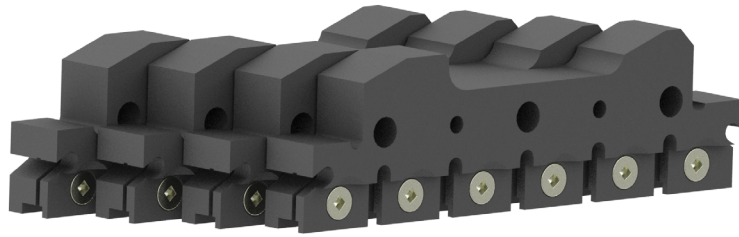
514-9F Hone Head Stone Holder Sets require 2 sets of 4 diamond stones - 3" (76mm) long Diamond stones. Total Length of Stone Holders 6" (152mm)

**514-9-4D Sleeve Assembly**

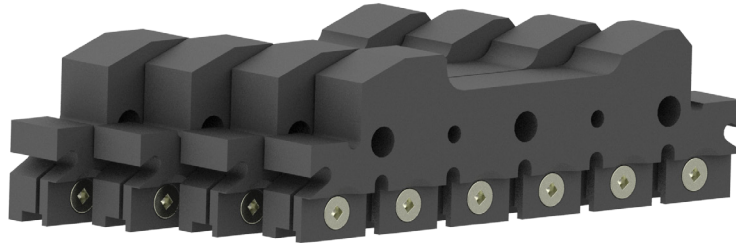
For 514-9D Extra Large Hone Head 6.1 - 12.00"  
(155 - 305mm)



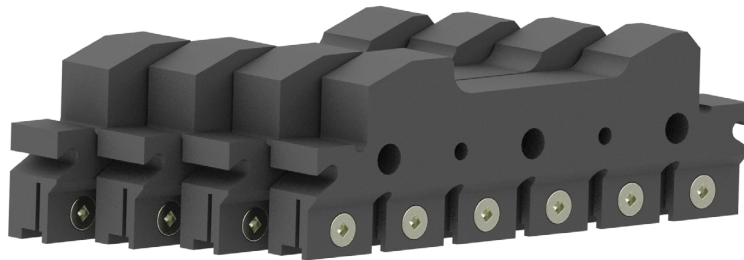
**514-9-25A Stone Holders**  
6.1 - 6.4" (155 - 163mm) set of 4



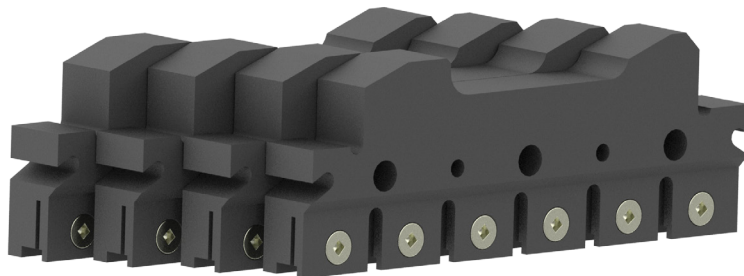
**514-9-25B Stone Holders**  
6.3 - 6.6" (160 - 168mm) set of 4



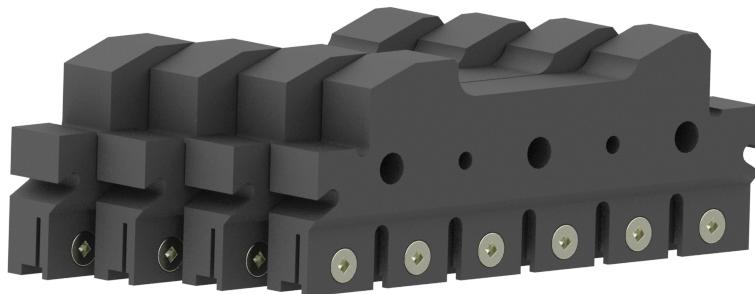
**514-9-25C Stone Holders**  
6.6 - 6.9" (168 - 175mm) set of 4



**514-9-25D Stone Holders**  
6.9 - 7.2" (175 - 183mm) set of 4

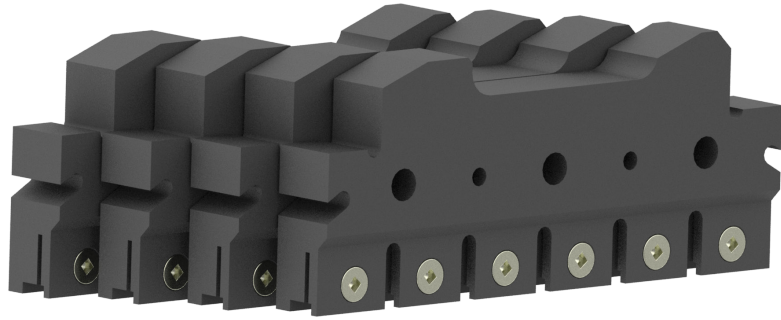


**514-9-25E Stone Holders**  
7.2 - 7.5" (183 - 191mm) set of 4

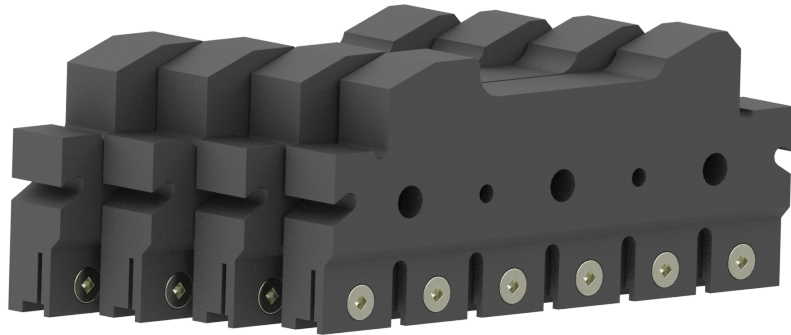




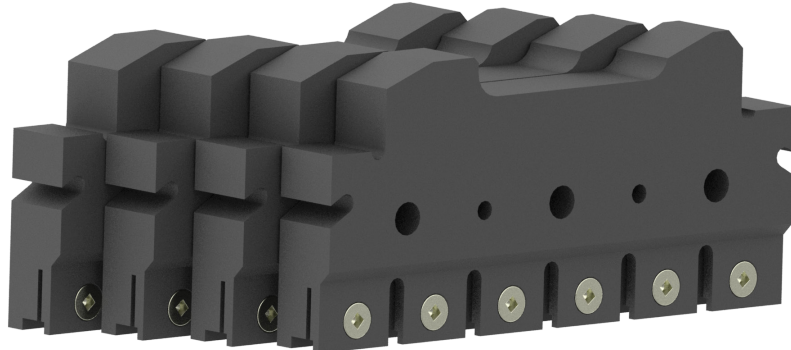
**514-9-25F Stone Holders**  
7.5 - 7.8" (191 - 198mm) set of 4



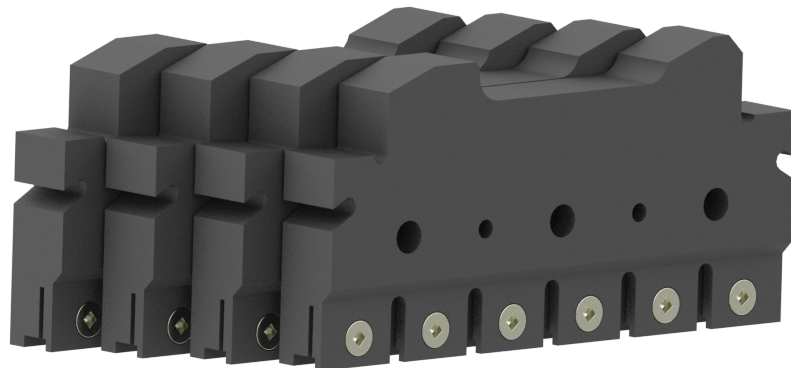
**514-9-25G Stone Holders**  
7.8 - 8.1" (198 - 206mm) set of 4



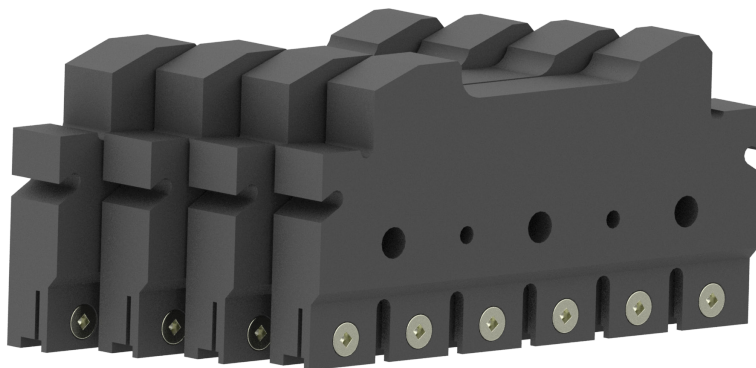
**514-9-25H Stone Holders**  
8.1 - 8.4" (206 - 213mm) set of 4



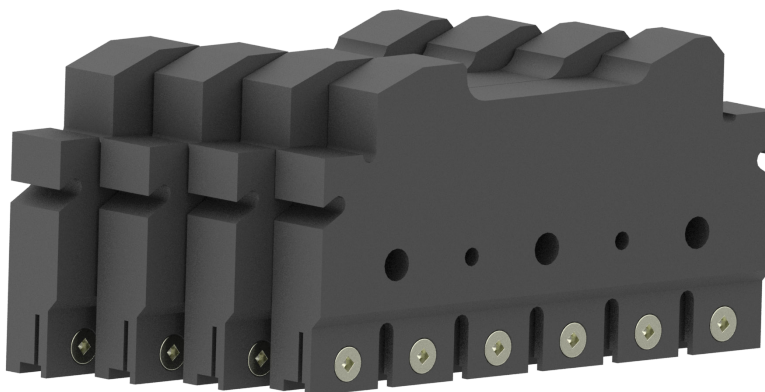
**514-9-25J Stone Holders**  
8.4 - 8.7" (213 - 221mm) set of 4



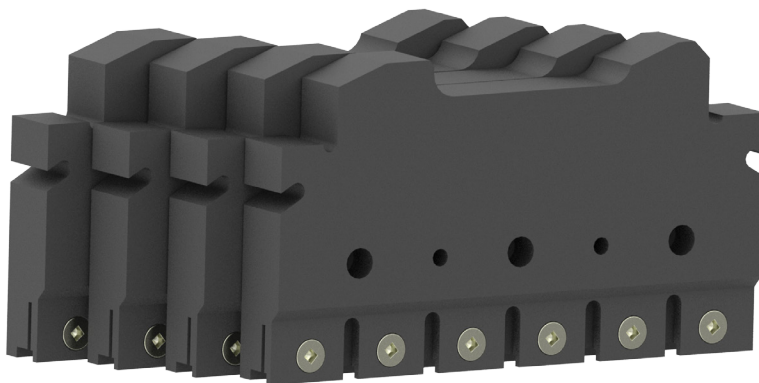
**514-9-25K Stone Holders**  
8.7 - 9.0" (221 - 229mm) set of 4



**514-9-25L Stone Holders**  
9.0 - 9.3" (229 - 236mm) set of 4



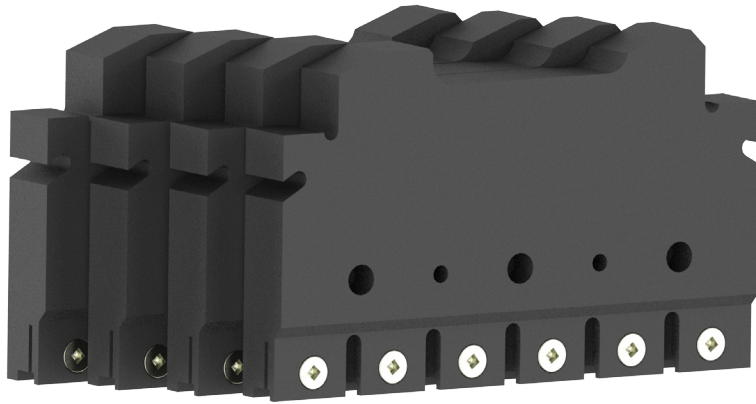
**514-9-25M Stone Holders**  
9.3 - 9.6" (236 - 244mm) set of 4



**514-9-25Q Stone Holders**  
9.6 - 9.9" (244 - 252mm) set of 4



**514-9-25R Stone Holders**  
9.9 - 10.2" (252 - 260mm) set of 4



**514-9-25S Stone Holders**  
10.2 - 10.5" (260 - 267mm) set of 4



**514-9-25T Stone Holders**  
10.5 - 10.8" (267 - 275mm) set of 4



**514-9-25U Stone Holders**  
10.8 - 11.1" (275 - 283mm) set of 4



**514-9-25N Stone Holders**  
10.9 - 11.2" (276mm - 284mm) set of 4



**514-9-25P Stone Holders**  
11.67 - 11.98" (296mm - 304mm) set of 4



Stone Holder, 12" - 14" (403 - 355mm) set of 4, contact Rottler for availablity.

### Special Hone Head Single Stage, 12 Stone

#### 514-9N Hone Head, Single Stage (12 Stone)

3.9" - 4.375" (99.06MM - 111.125MM ), H-70



#### 110-171-01 Single Stage Diamond Stones

.0781" Tall (19.83MM), 600 Grit Set of 12



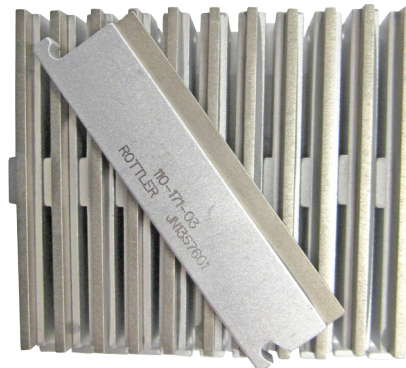
#### 110-171-02 Single Stage Diamond Stones

.0781" Tall (19.83MM), 1200 Grit, Set of 12



#### 110-171-03 Single Stage Diamond Stones

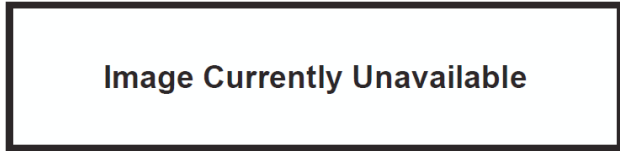
.0781" Tall (19.83MM), (325/400 Grit) - Set of 12



**Special Hone Head, 1.97" - 2.32" (50mm - 59mm) , 6 Stone Holder**

**LO-6568-161 Hone Head, Single Stage (6 Stone)**

1.97" - 2.32" (50MM - 59MM )



**110-174-01 Diamond Stones**

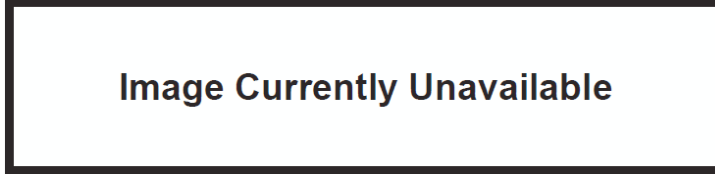
.25 x .640 x 4.25 (6.35MM x 16.26MM x 107.95MM)  
(325/400 Grit) - Set of 5



**Special Hone Head, 1.69" - 1.93" (43 - 49mm) , 5 Stone Holder**

**LO-6568-160 Hone Head, Single Stage**

(5 Stone) 1.69" - 1.93" (43MM - 49MM )



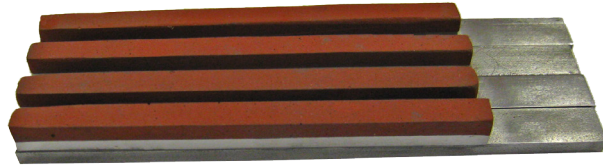
**110-173-01 Diamond Stones**

.25 x .5 x 4.25 (6.35MM x 12.7MM x 107.95MM)  
(325/400 Grit) - Set of 5



**Special Stones for Finishing Aluminum Silicone Cylinders**  
 (Refer to bulletin No. 284) Requires Rottler Precision 4 or 6 Stone Holder Hone Heads

**514-9-18P Special Red Finish Diamonds**  
 For Final Sizing (set of 4)



**514-9-18N Silicone Abrasive Exposing Stones**  
 For Removing Aluminum (set of 4)



**514-9-21 Polishing Felt Pads**  
 For use with 514-9-21F silicon paste. (set of 4)



**514-9-21F Silicone Paste**  
 For use with 514-9-21 Polishing felt pads





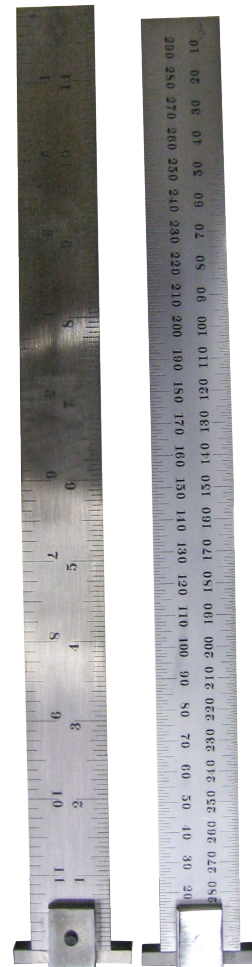
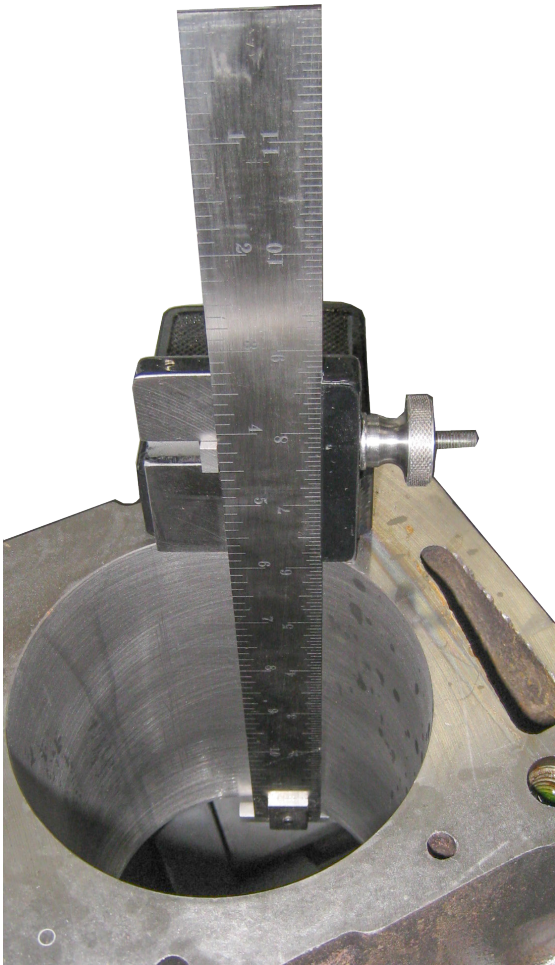
## Optional Measuring Equipment

### 201 Mitutoyo Surface Tester Surfptest 201



### 514-8-27 Stone Depth Scale and Holder Assembly (inch)

### 514-8-27F Stone Depth Scale and Holder Assembly (metric)



## Adapter for Pin Honing Mandrels

### 514-9V Adapter

To drive universal honing mandrels such as Sunnen and Delapena

